

Manual for Smart Hotel Software

Software Version requires: SMART Hotel System Software V1.10 or above

Manual Version: 1.3

Updated Date: July 17, 2012

Prepared by: Mendel Lin

Email: MenelLin@126.com

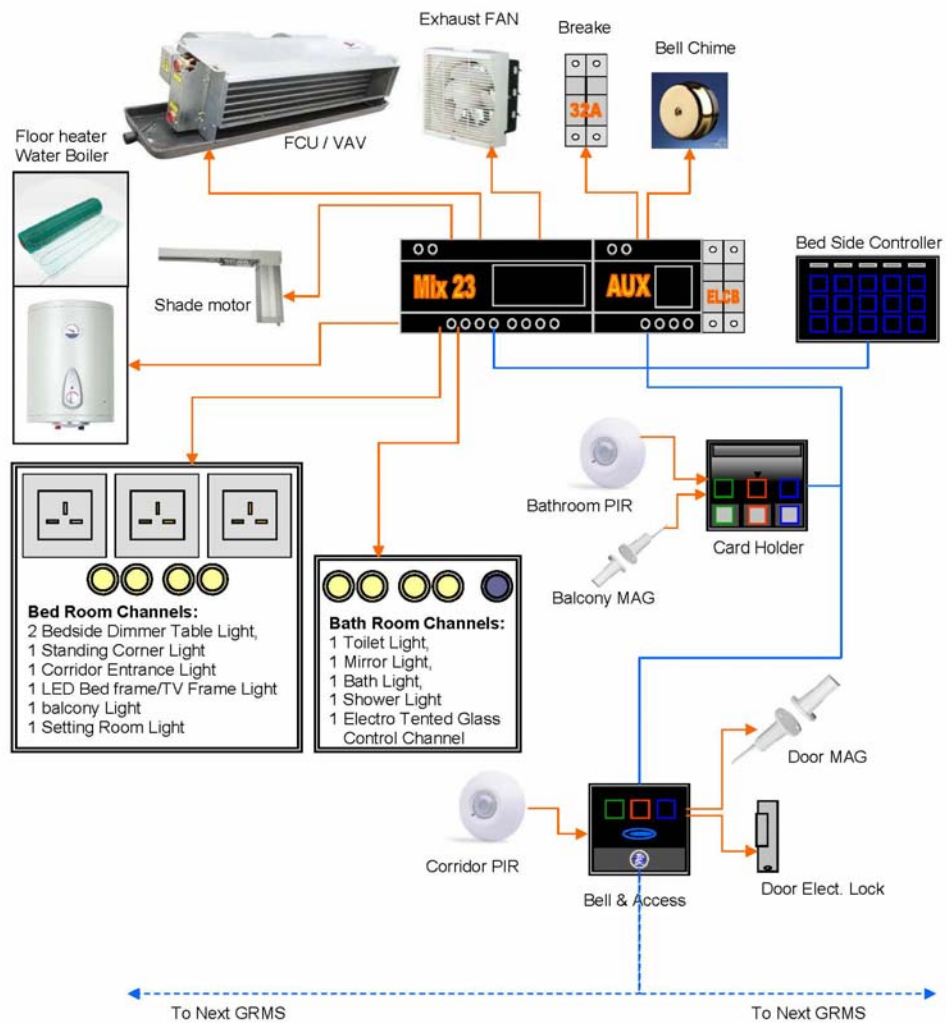
Copyright: SMART GROUP

Content	
SN	Chapter
1	Smart Hotel System instruction
2	Hotel Devices instruction
3	Cabling and Installation
4	Prepare one Server
5	Install MS SQL Server 2000 Personal Edition Version on Server
6	Create SmartHotel Database on SQL Server
7	Get started to run Smart Hotel Software
8	Password of Philips MIFARE RF Card and Hotel Door Access
9	Building, Floor, Room Settings
10	Scan all online devices
11	Pairing Room Devices
12	Check In
13	Check Out
14	Cancel Card
15	Hotel Door Bell Access Settings
16	Hotel Card Holder Settings
17	Hotel AUX Power Settings
18	Hotel Zone Beast Settings
19	Hotel Bedside Controller Settings
20	Hotel Card encoder device

1. Smart-Hotel System instruction

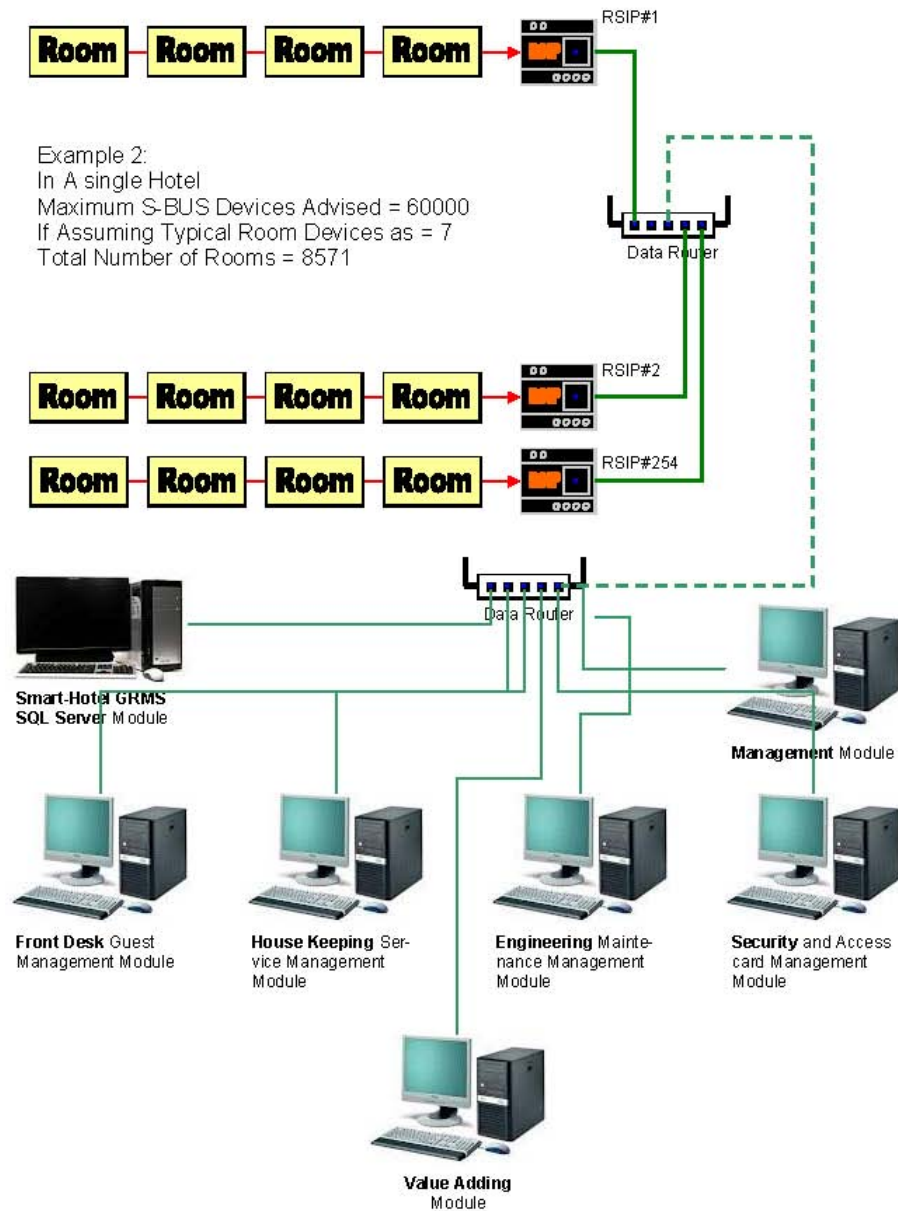
1.1. Typical GRMS Connection

Tipycal GRMS Coonection



1.2 Smart-Hotel Environment

Smart-Hotel Environment

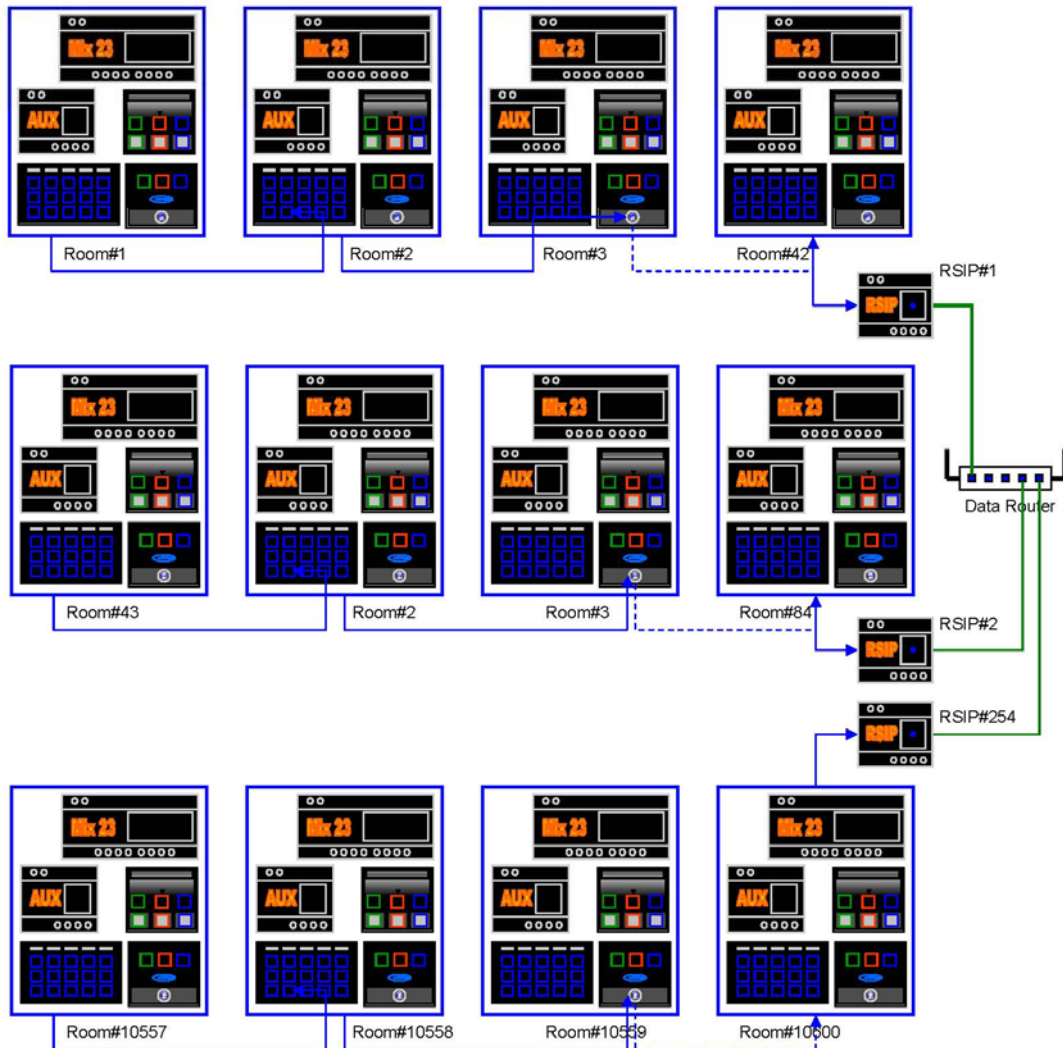


1.3 Multi-Room Networking

Multi-Room Networking

Example 1

Assuming That Each Room Has Typical 6 Devices: as below and Adding 1 DDP or 4 Button switch. This Means in a single Subnet we can have up to 42 Rooms without any need for Adding

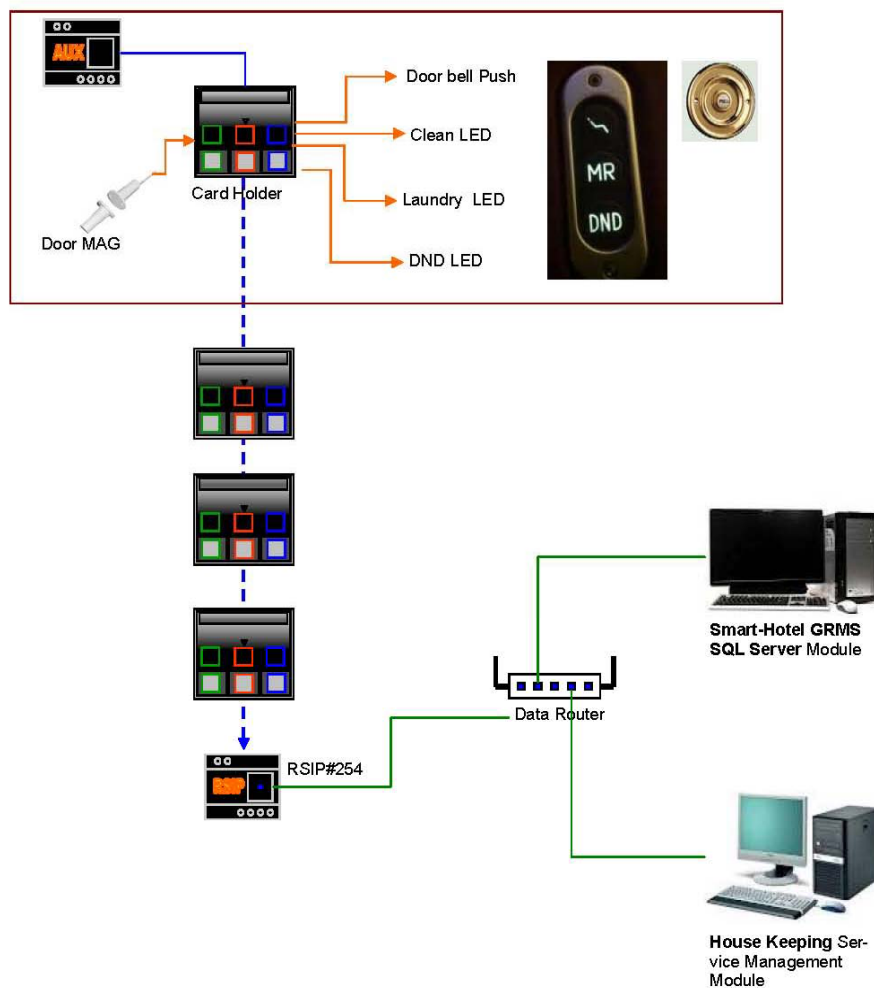


1.4 Simplest Service Panel

Simplest Service Panel

Example 3


Several hotels has their Own Card Access system (Hotel Locking) but need only to enhance the Service System. Also They Have their Own Design for Brass or other Elegant or artistic Shapes that fit their Hotel classical or Contemporary look and need. Thus all they require from Smart-G4 is to have a Main card Holder with Service that can be used direct with their Designer Made Panels. Smart-industry Made this Possible via Both On-Line and Offline system Solutions. See Below diagram Example.



2. Hotel Devices Introduction

SN	PIC	Device Name	Model#
----	-----	-------------	--------

1		Hotel Access	Door	SB-3SBXS-WL
2		Hotel Holder Service	Card with	SB-3SCARD-WL
3		Hotel Bedside		SB-BedSd-UN
4		Auxiliary Hotel Room Power Master		SB-HAux-WL
5		Hotel Encoder	Card	SB-CardRR-FL

6		Hotel Zone-Beast 23 port Mix Control Module (G4)	SB-ZMix23-DN
---	-----------------------------------------------------------------------------------	--------------------------------------------------------------	--------------


3. Cabling and Installation

Make sure the cabling and installation are ready, for the connection diagram, please check above **Smart-Hotel System instruction**

4. Prepare one Server

you need to have one server that is always run in 24 hours,

Here is the specification for the server:

SN	DESC	Specification
1	Server computer	<p>OS: Microsoft windows server 2003 (recommended) or WINXP (for temporary needed) or WIN7 (for temporary needed)</p>  <p>The server needs to be run in 24 hours every day, so the server must be stable. You can use your laptop with XP system as server for temporary needed.</p>
2	MS SQL Server software	<p>SQL Sever Version required: MS SQL Server software 2000 personal edition (this personal edition version can be installed on WINXP and WIN7 and windows Server 2003 system) (Recommended)</p>

5. Install MS SQL Server 2000 Personal Edition Version on the Server

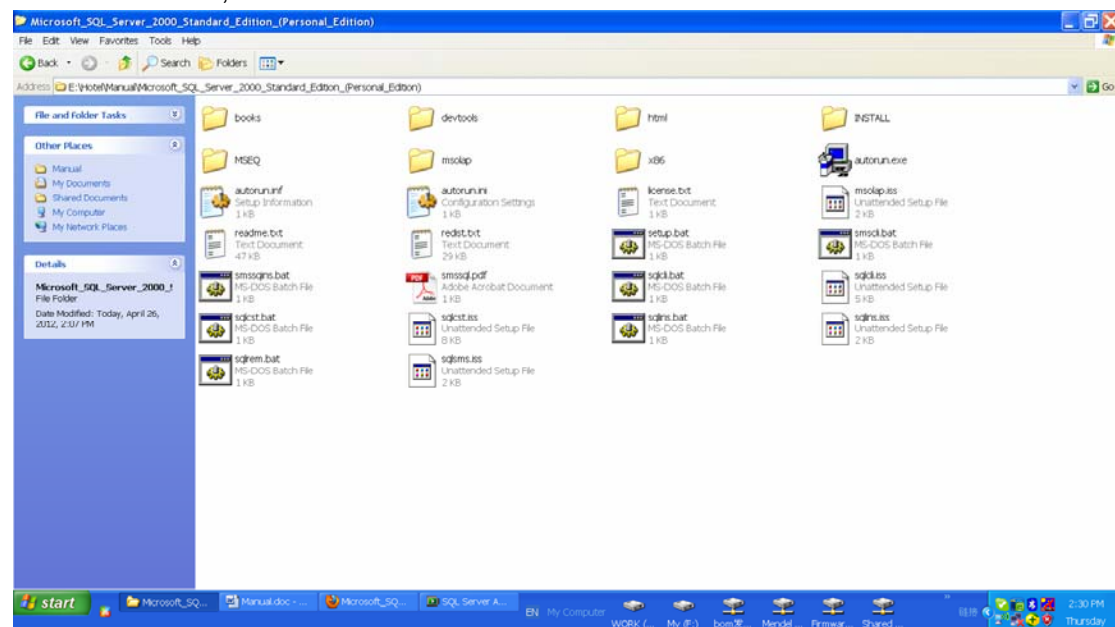
we recommended the version of MS SQL Server either MS SQL Server 2000 Personal edition to be installed on the server.

MS SQL Server 2000 Personal Edition Version is available from the link below:

http://www.4shared.com/rar/PNSmekRm/Microsoft_SQL_Server_2000_Pers.html

To download it, you need to have account of 4shared website, if you don't have it, just register for free.

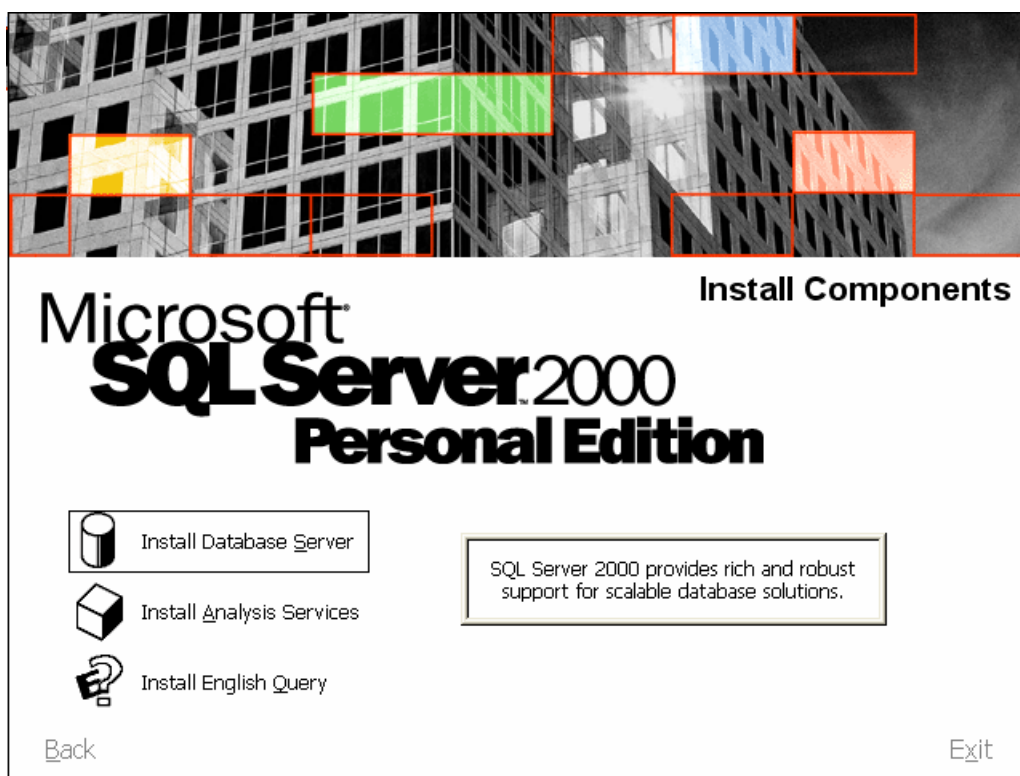
After download it, start to install it



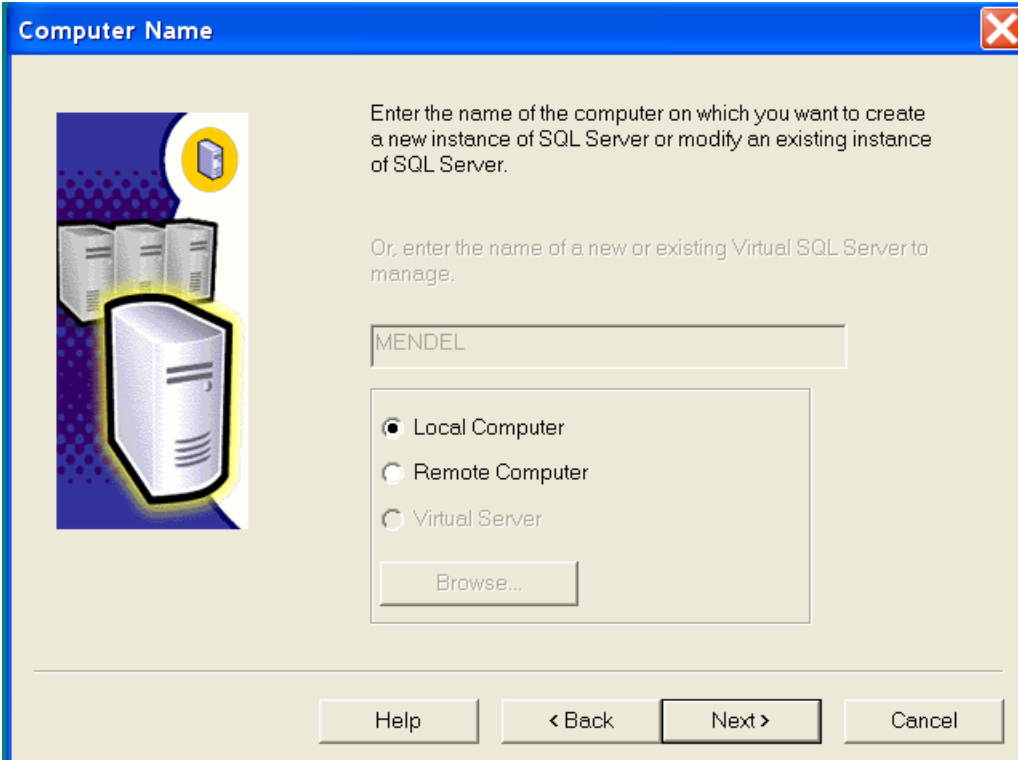
Double click to run the Autorun.exe, click **SQL Server 2000 components**



Click **Install Database Server**



Select Local Computer



The 'Computer Name' dialog box has a blue title bar with the text 'Computer Name' and a red close button. On the left is a graphic of server racks. The main area contains instructions: 'Enter the name of the computer on which you want to create a new instance of SQL Server or modify an existing instance of SQL Server.' and 'Or, enter the name of a new or existing Virtual SQL Server to manage.' Below this is a text box containing 'MENDEL'. A group box contains three radio buttons: 'Local Computer' (selected), 'Remote Computer', and 'Virtual Server'. Below the radio buttons is a 'Browse...' button. At the bottom are 'Help', '< Back', 'Next >', and 'Cancel' buttons.

Computer Name

Enter the name of the computer on which you want to create a new instance of SQL Server or modify an existing instance of SQL Server.

Or, enter the name of a new or existing Virtual SQL Server to manage.

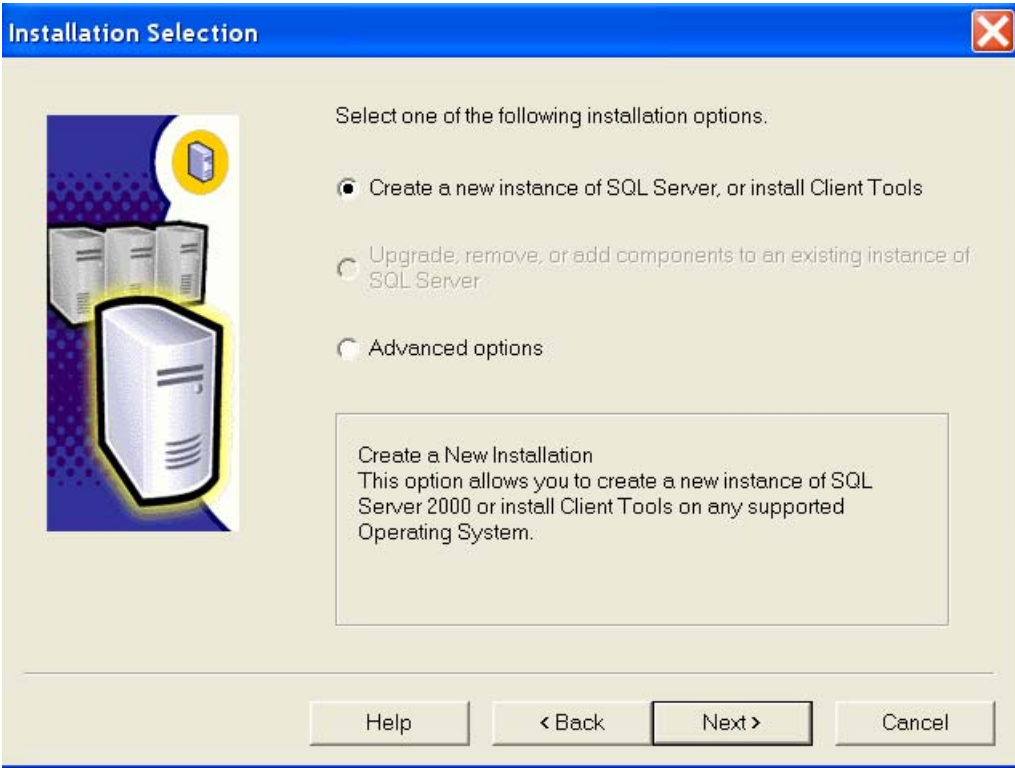
MENDEL

☒ Local Computer
☐ Remote Computer
☐ Virtual Server

Browse...

Help < Back Next > Cancel

Select create a new instance of SQL server, or install Client Tools



The 'Installation Selection' dialog box has a blue title bar with the text 'Installation Selection' and a red close button. On the left is a graphic of server racks. The main area contains the instruction: 'Select one of the following installation options.' Below this are three radio buttons: 'Create a new instance of SQL Server, or install Client Tools' (selected), 'Upgrade, remove, or add components to an existing instance of SQL Server', and 'Advanced options'. Below the radio buttons is a text box with the heading 'Create a New Installation' and the text: 'This option allows you to create a new instance of SQL Server 2000 or install Client Tools on any supported Operating System.' At the bottom are 'Help', '< Back', 'Next >', and 'Cancel' buttons.

Installation Selection

Select one of the following installation options.


☒ Create a new instance of SQL Server, or install Client Tools
☐ Upgrade, remove, or add components to an existing instance of SQL Server
☐ Advanced options

Create a New Installation
This option allows you to create a new instance of SQL Server 2000 or install Client Tools on any supported Operating System.

Help < Back Next > Cancel

User Information

Enter your name below. It is not necessary to enter a company name.



Name:


Company:

< Back Next > Cancel

Select **Server and Client Tools**

Installation Definition

You can select one of the following types of installations.



☐ Client Tools Only


☒ Server and Client Tools

☐ Connectivity Only

This option allows you to install a server and the client tools.
Use this option if you want to set up a server with
administration capabilities.

Help < Back Next > Cancel

Instance Name



☒ Default
 For a default installation, leave Default checked and click Next.

 To install or maintain a named instance of SQL Server on this computer clear the Default checkbox and type or select an instance name.

 A new name must be 16 characters or less and should start with a letter or other acceptable character. For more information, click Help.

Instance name:

Setup Type

Click the type of Setup you prefer, then click Next.

☒ Typical

Installed with the most common options. Recommended for most users.

☐ Minimum

Installed with minimum required options.

☐ Custom

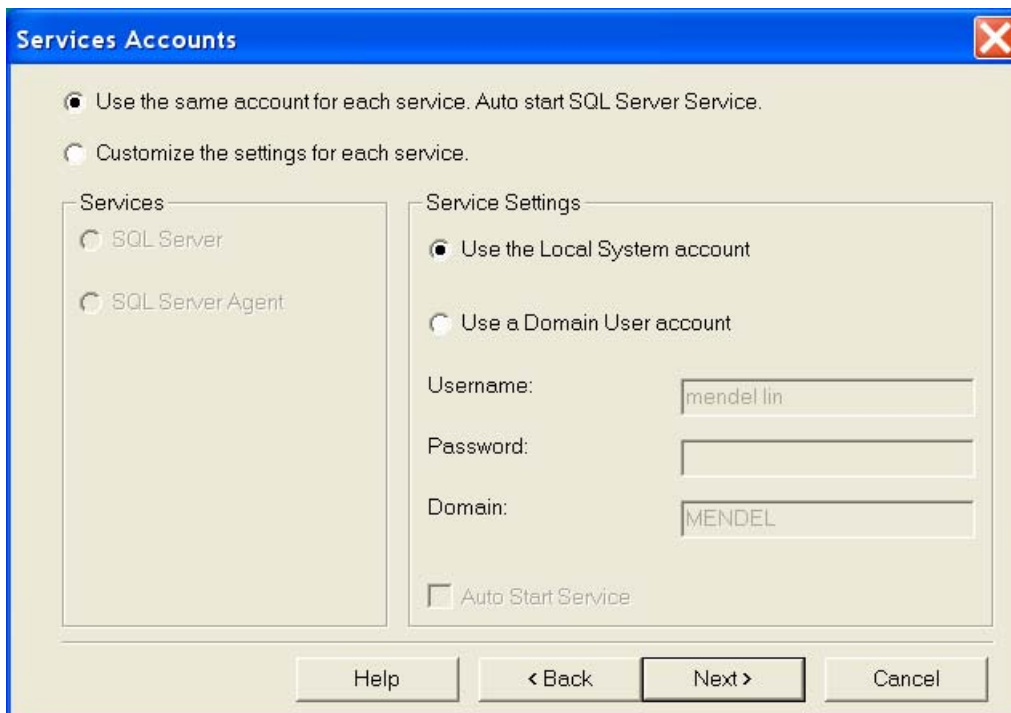
You may choose the options you want to install. Recommended for advanced users.

Destination Folder

Program Files	<input type="button" value="Browse..."/>	C:\Program Files\Microsoft SQL Server
Data Files	<input type="button" value="Browse..."/>	C:\Program Files\Microsoft SQL Server

	Required:	Available:
Space on program files drive:	38073 K	61880724 K
Space on system drive:	158694 K	61880724 K
Space on data files drive:	34432 K	61880724 K

Select **Use the Local System account**



The 'Services Accounts' dialog box is shown with a blue title bar and a close button. It contains two radio buttons at the top: 'Use the same account for each service. Auto start SQL Server Service.' (selected) and 'Customize the settings for each service.' Below these are two panels. The 'Services' panel on the left has two radio buttons: 'SQL Server' (selected) and 'SQL Server Agent'. The 'Service Settings' panel on the right has two radio buttons: 'Use the Local System account' (selected) and 'Use a Domain User account'. Below these are three text boxes: 'Username:' with 'mendel lin', 'Password:' (empty), and 'Domain:' with 'MENDEL'. At the bottom of the 'Service Settings' panel is a checkbox for 'Auto Start Service'. At the bottom of the dialog are four buttons: 'Help', '< Back', 'Next >', and 'Cancel'.

Services Accounts

☒ Use the same account for each service. Auto start SQL Server Service.
☐ Customize the settings for each service.

Services

☒ SQL Server
☐ SQL Server Agent

Service Settings

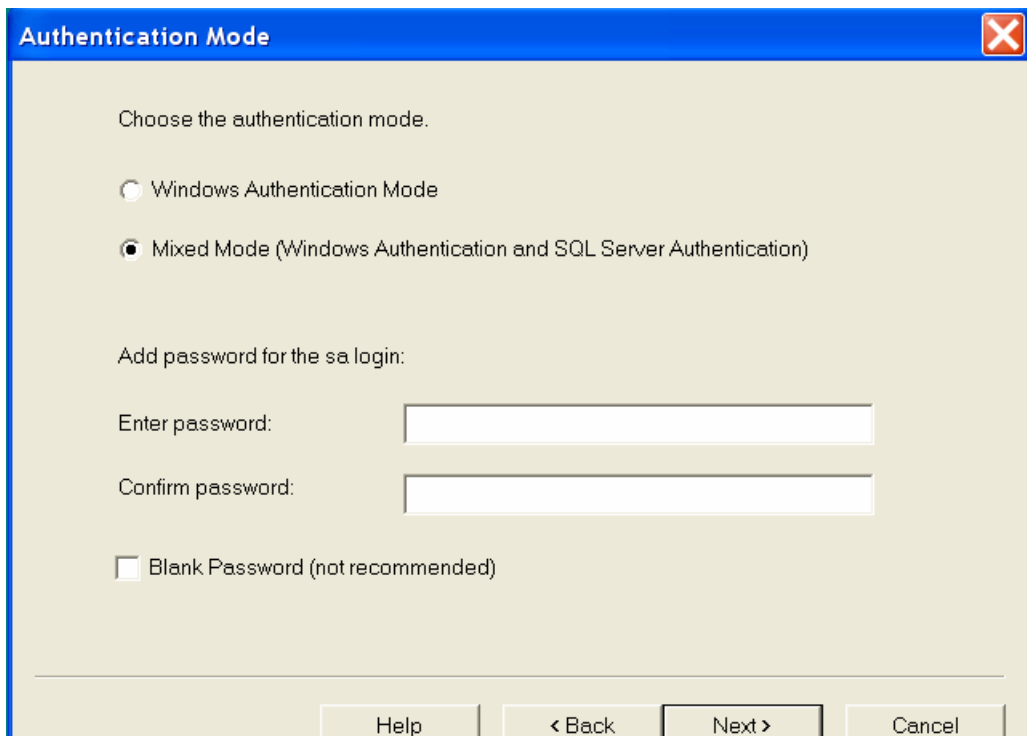
☒ Use the Local System account
☐ Use a Domain User account

Username: mendel lin
Password:
Domain: MENDEL

☐ Auto Start Service

Help < Back Next > Cancel

Select **Mixed Mode**, the username is sa, please type the password and remember it.



The 'Authentication Mode' dialog box is shown with a blue title bar and a close button. It contains a text label 'Choose the authentication mode.' followed by two radio buttons: 'Windows Authentication Mode' and 'Mixed Mode (Windows Authentication and SQL Server Authentication)' (selected). Below these is a text label 'Add password for the sa login:' followed by two text boxes: 'Enter password:' and 'Confirm password:'. At the bottom is a checkbox for 'Blank Password (not recommended)'. At the bottom of the dialog are four buttons: 'Help', '< Back', 'Next >', and 'Cancel'.

Authentication Mode

Choose the authentication mode.

☐ Windows Authentication Mode
☒ Mixed Mode (Windows Authentication and SQL Server Authentication)

Add password for the sa login:

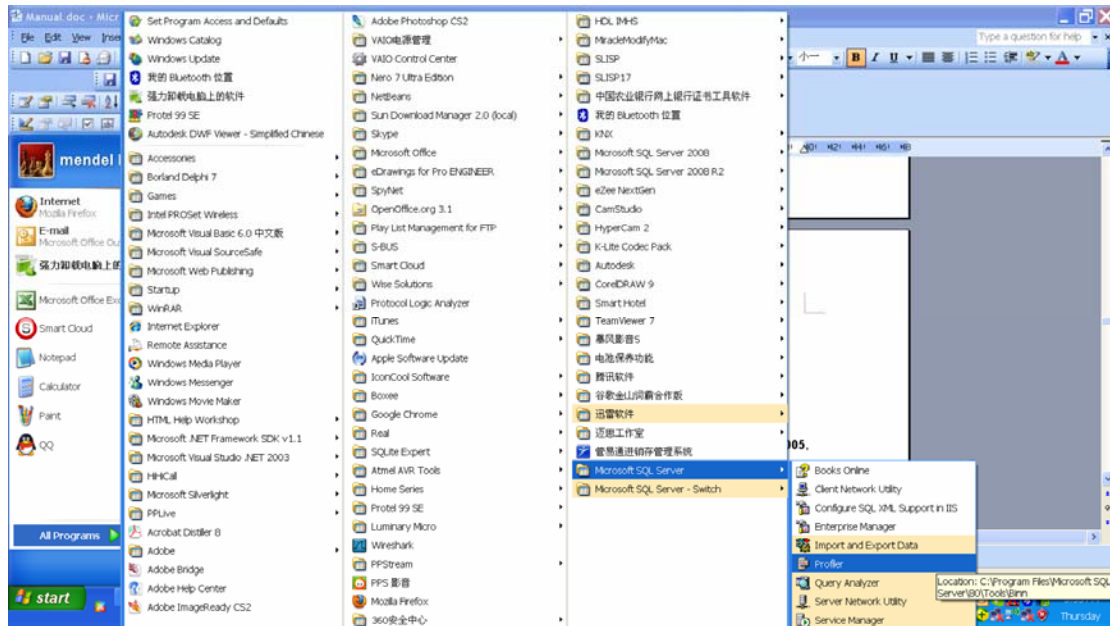
Enter password:
Confirm password:

☐ Blank Password (not recommended)

Help < Back Next > Cancel

Then just click next unit it's done.

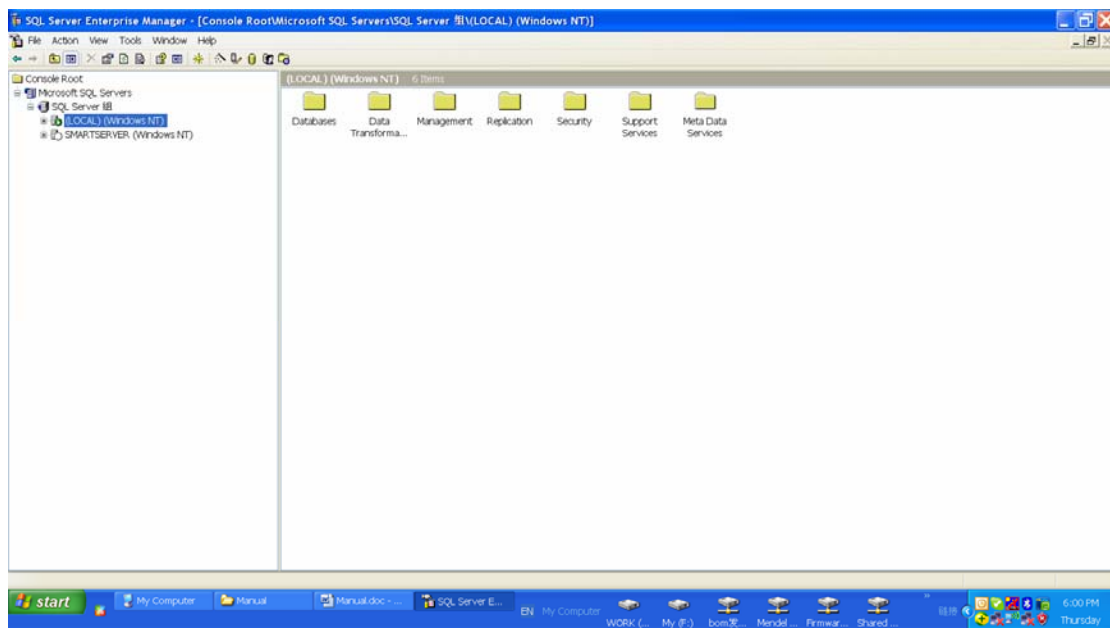
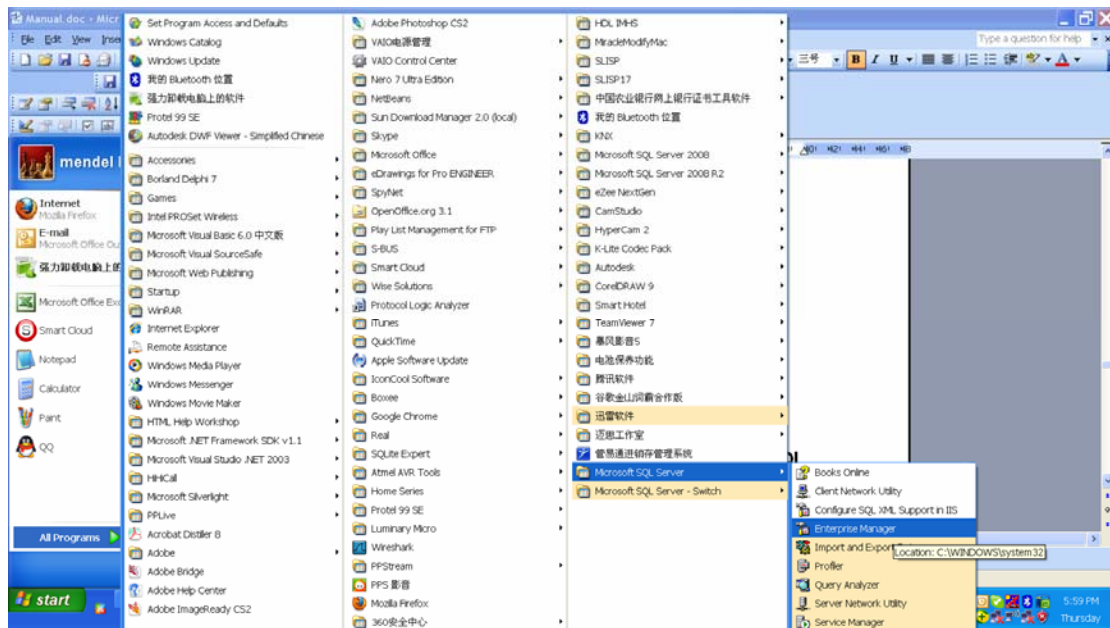
You can see Microsoft SQL Server from the start menu after the installation is complete.



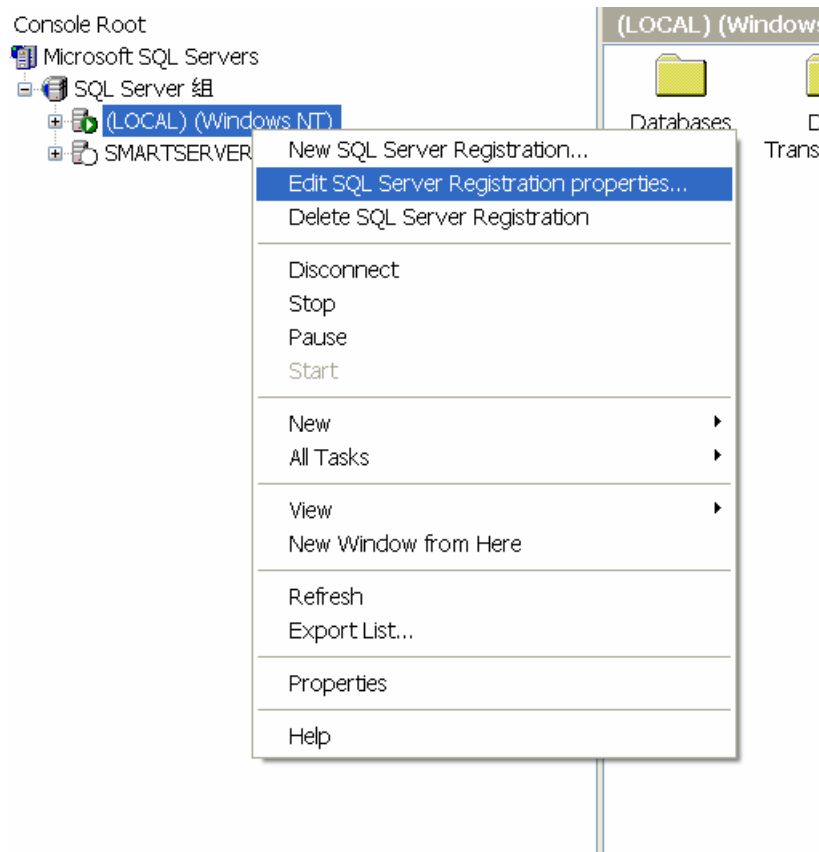
6. Create SmartHotel Database on SQL Server

Important Hint: if you don't have SmartHotel database on your SQL server, you need to create it by following step; But if you have already had it, please do not delete you own SmartHotel database and restore the new database. If did that, all your data will be lost.

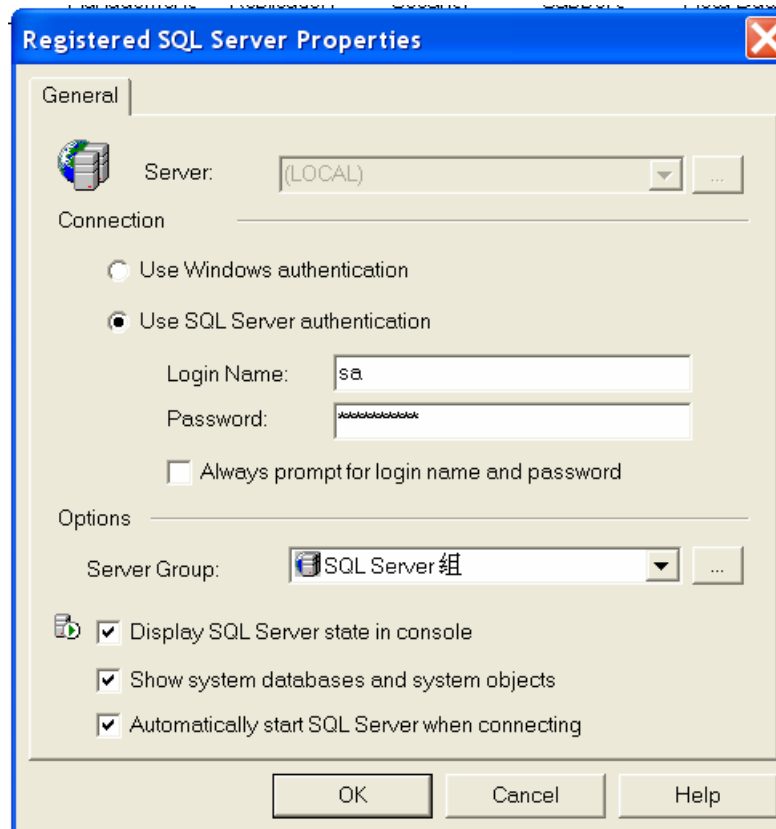
Start Menu-> All Programs -> Microsoft SQL Server, Click Enterprise Manager



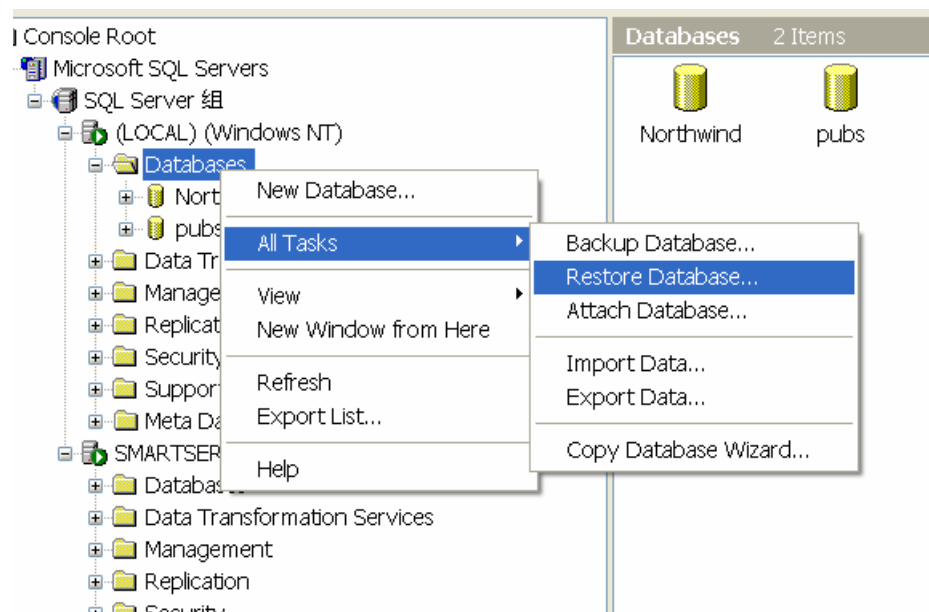
Right Click **(Local)**, Click **Edit SQL Server Registration Properties**



Type the username and password as below, then click button **OK** to connect SQL Server



Right Click **Databases** -> **All Tasks** -> **Restore Database**



Type the database name: **SmartHotel**

Choose **from Device** as below

then Click button **Select Devices**

Restore database

General Options

Restore as database: SmartHotel

Restore: ☐ Database ☐ Filegroups or files ☒ From device

Parameters

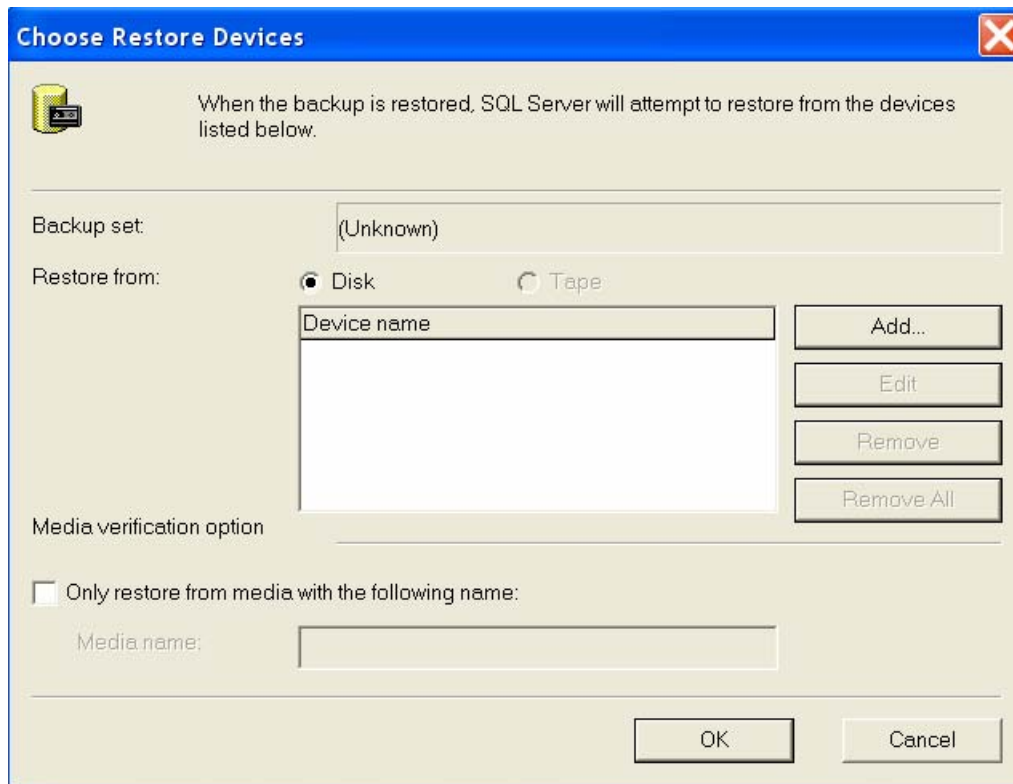
Devices:

Backup number:

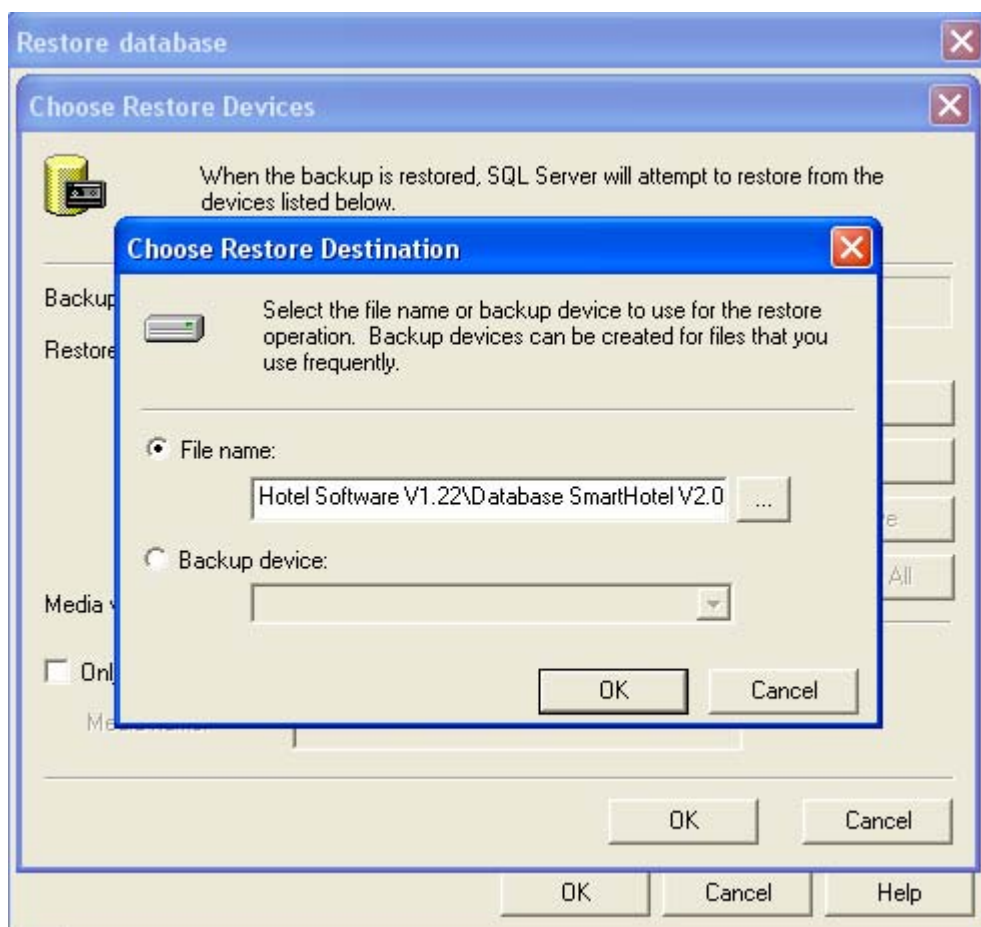
☒ Restore backup set

- ☒ Database - complete
- ☐ Database - differential
- ☐ Transaction log
- ☐ File or filegroup

☐ Read backup set information and add to backup history



Click button **Add** above, and choose the database file: Smart Hotel Database for MS SQL Server 2000, and click the button **OK**



Choose Restore Devices

When the backup is restored, SQL Server will attempt to restore from the devices listed below.

Backup set: (Unknown)

Restore from: ☒ Disk ☐ Tape

Device name
E:\publish\Hotel\Smart Hotel Software V1...

Add... Edit Remove Remove All

Media verification option

☐ Only restore from media with the following name:

Media name:

OK Cancel

Click the button **OK** above

Restore database

General Options

Restore as database: SmartHotel

Restore: ☐ Database ☐ Filegroups or files ☒ From device

Parameters

Devices: E:\Hotel\Manual\Smart Hotel Software V1.11\Smr Select Devices...

Backup number: 1 View Contents...

☒ Restore backup set

- ☒ Database - complete
- ☐ Database - differential
- ☐ Transaction log
- ☐ File or filegroup

☐ Read backup set information and add to backup history

OK Cancel Help

Select the tab **Options**

Restore database

General Options

☐ Eject tapes (if any) after restoring each backup
☐ Prompt before restoring each backup
☐ Force restore over existing database

Restore database files as:

Original File Name	Restore As
c:\Program Files\Microsoft SQ...	c:\Program Files\Microsoft SQL Server\MSSQL\data\SmartHotel.n
c:\Program Files\Microsoft SQ...	c:\Program Files\Microsoft SQL Server\MSSQL\data\SmartHot...

Recovery completion state

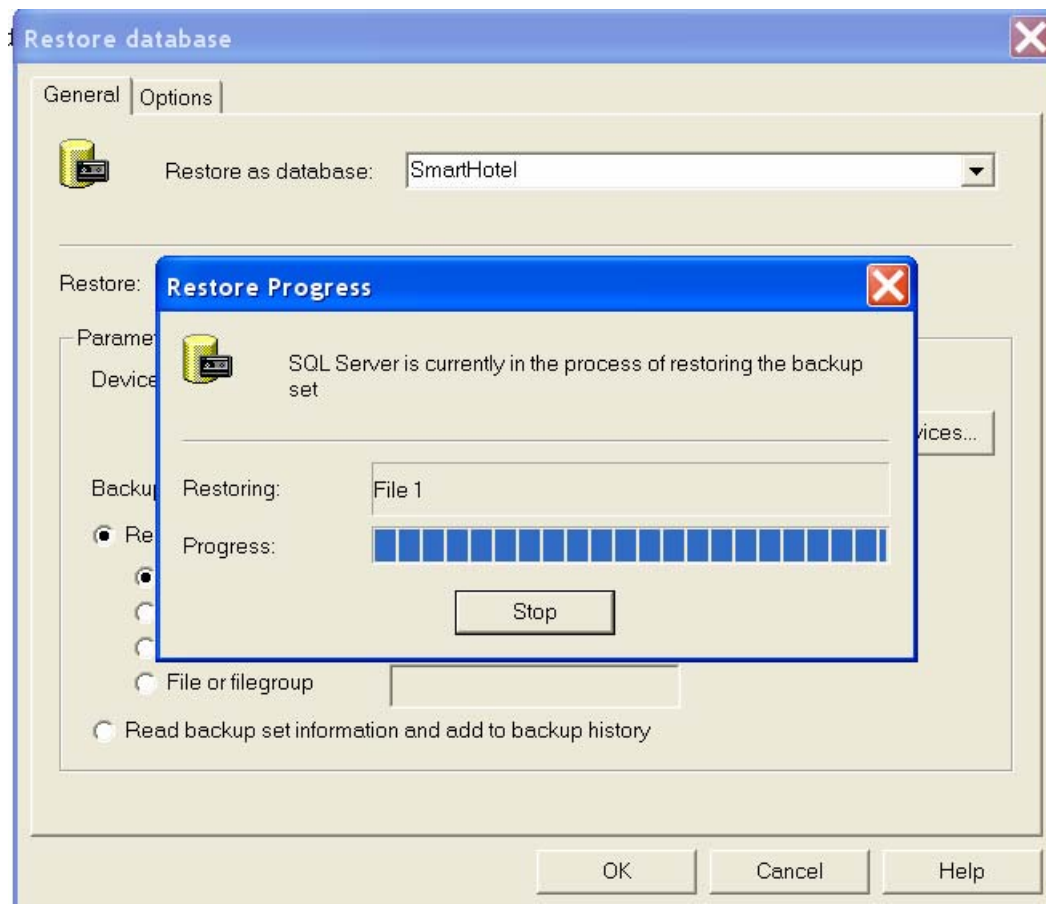
☒ Leave database operational. No additional transaction logs can be restored.
☐ Leave database nonoperational but able to restore additional transaction logs.
☐ Leave database read-only and able to restore additional transaction logs.

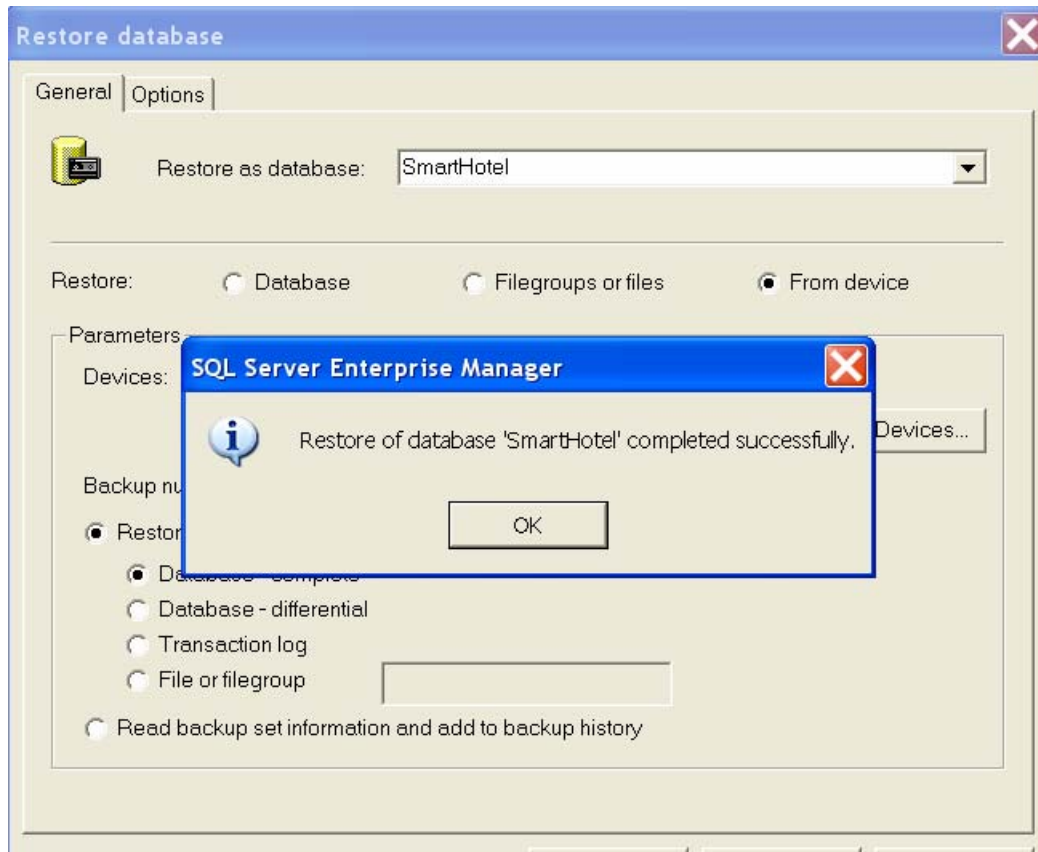
Undo file: C:\Program Files\Microsoft SQL Server\MSSQL\BACKUP\UNDO_S

OK Cancel Help

If MS SQL Server 2000 is installed on driver c, the field of **Restore As** should be filled out as the picture. If MS SQL Server 2000 is installed on other driver such as D, the file of Restore As should be filled up as below:
D:\Program Files\Microsoft SQL Server\...

Then Press **OK** Button





It will show SmartHotel database as below after successfully restore database.

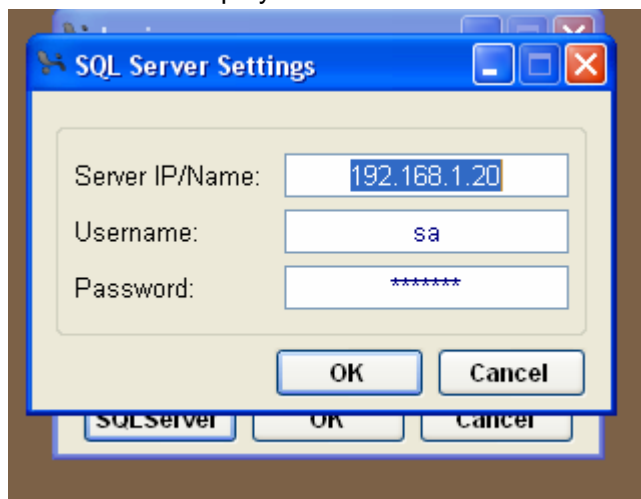
SQL Server 组				
(LOCAL) (Windows NT)				
Databases				
Northwind				
pubs				
SmartHotel				
Diagrams				
Tables				
Views				
Stored Procedures				
Users				
Roles				
Rules				
Defaults				
User Defined Data Types				
User Defined Functions				
Data Transformation Services				
Management				
Replication				
Security				
Adscription				
Building				
CardInfo				
CheckoutDate				
COM				
Const				
DeviceType				
DoorAccessLog				
FileInfo				
Floor				
FloorDefinition				
HotelCode				
HotelPwd				
KeyFunction				
Log				
OnlineDevice				
PairingState				
Room				
Users				

7. Get started to run Smart Hotel Software



The default username is admin, Password: admin

when you first time run this software, or press CTRL+SHIFT+F12 together, the following screen will be displayed:



Above screen is for SQL Server Settings,
Server IP and username and password are required.
Username & password is for SQL Server,
after fill out the database as above, click button OK.

If it's successful, it will show the screen below

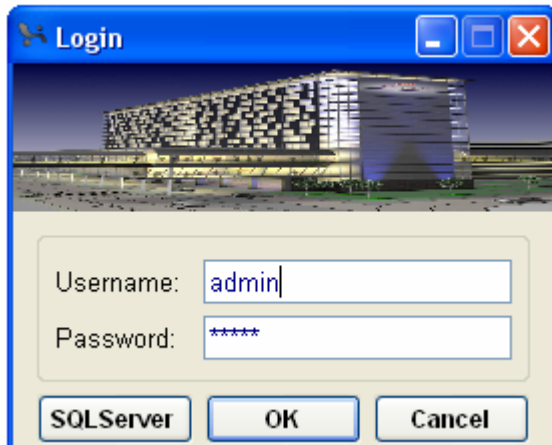


If it fails, the follow screen will be showed:



After you have successfully configured the SQL Server, the SQL Server Settings Page will not show again, if you would like to change the SQL Server settings, there is one way to do that.

In Login Page, Press key **CTRL+Shift+F12** together, the button **SQL Server** will be showed as below:



Then you just click the button **SQLServer** to go to SQL Server Settings Page.

8. Password of Philips MIFARE RF Card and Hotel Door Access

the system requires Philips MIFARE RF Card; the model # of card can be Philips S50 and S70 both.

MIFARE RF card and hotel card access device both has password and need to set same password so that the RF card can open the door.

The password is taking 6 bytes, each byte can be set 0 ~ 255,

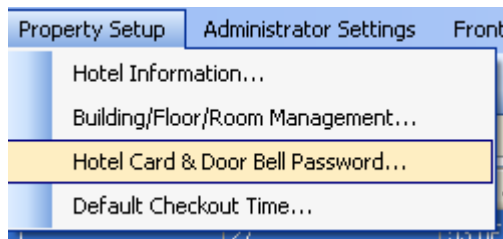
The factory default password of MIFARE RF card is **255 255 255 255 255 255**

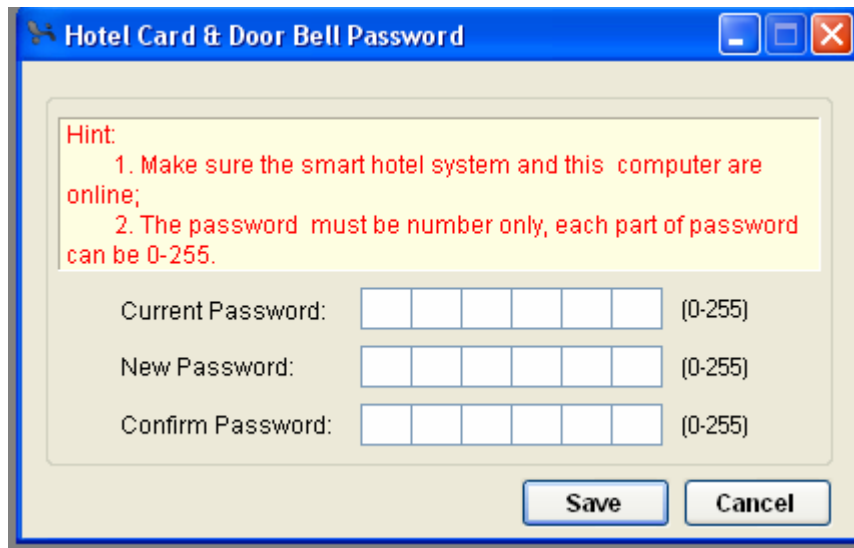
The factory default password of Hotel Card Access device is also **255 255 255 255 255 255**

When you are going to change the password, Please make sure all hotel door access device are online.

Here is the screen for changing password of both RF card and Hotel Door Access Device.

Menu **Property Setup -> Hotel Card & Door Bell Password**





Hotel Card & Door Bell Password

Hint:
 1. Make sure the smart hotel system and this computer are online;
 2. The password must be number only, each part of password can be 0-255.

Current Password: (0-255)

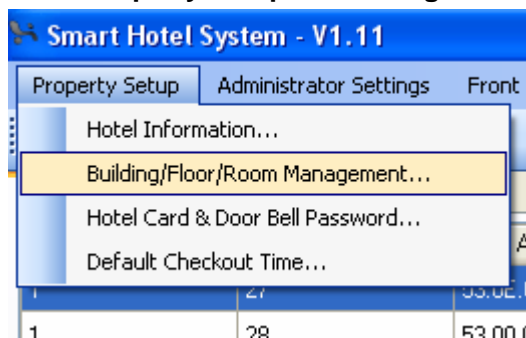
New Password: (0-255)

Confirm Password: (0-255)

Save **Cancel**

9. Building, Floor, Room Settings

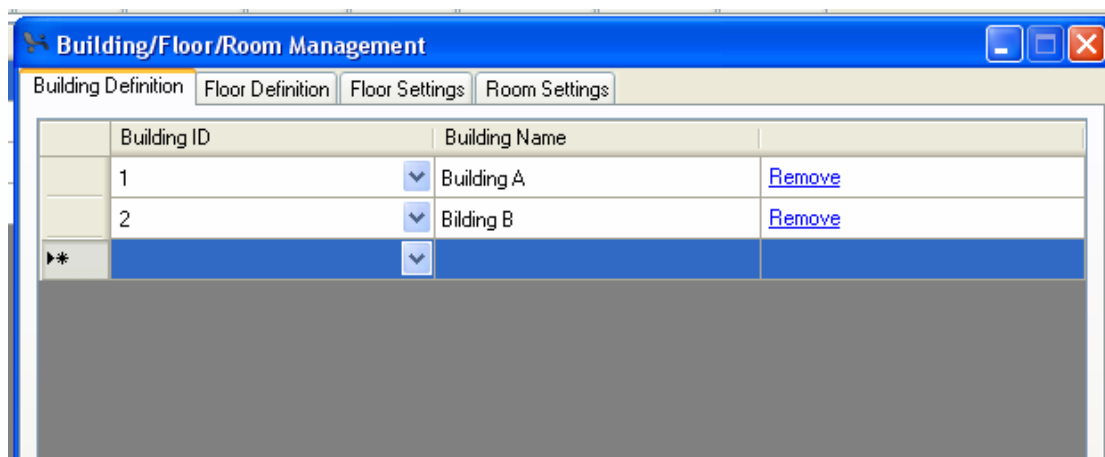
Menu **Property Setup -> Building/Floor/Room Management**



Building Settings

if the hotel has more than one building, you can add the building.

Building # is up to 255.



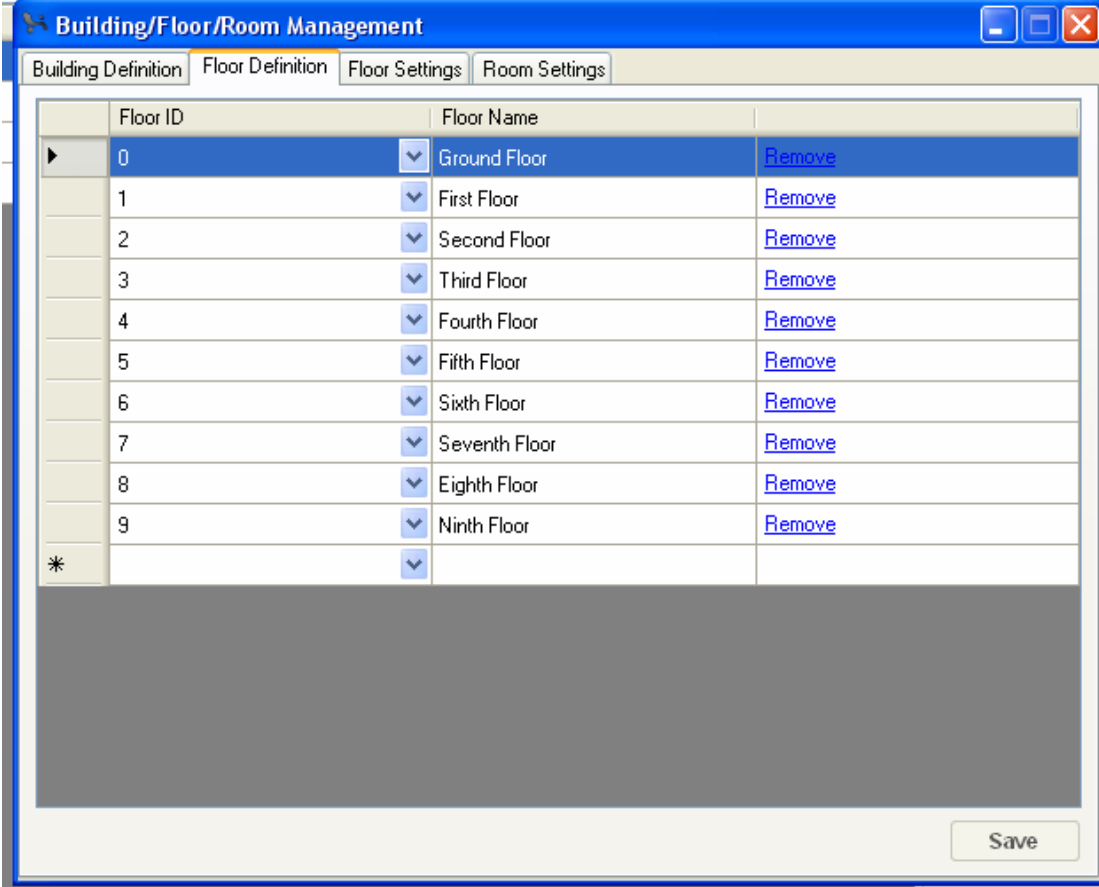
Building/Floor/Room Management

Building Definition | Floor Definition | Floor Settings | Room Settings

Building ID	Building Name	
1	Building A	Remove
2	Bilding B	Remove
▶*		

Floor Definition

Define all the floor name as needed, floor # is up to 255



The screenshot shows a software window titled "Building/Floor/Room Management" with four tabs: "Building Definition", "Floor Definition" (selected), "Floor Settings", and "Room Settings". The "Floor Definition" tab contains a table with the following data:

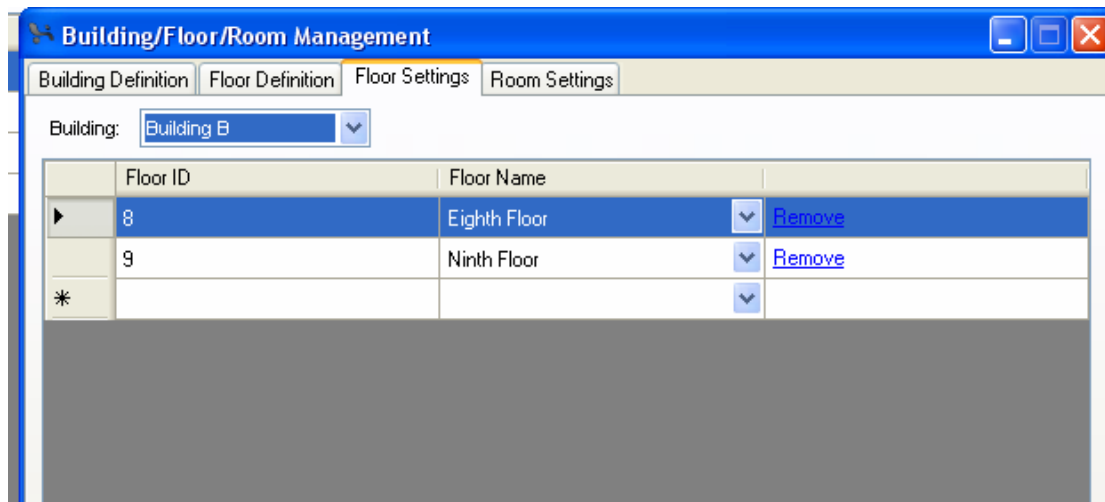
	Floor ID	Floor Name	
▶	0	Ground Floor	Remove
	1	First Floor	Remove
	2	Second Floor	Remove
	3	Third Floor	Remove
	4	Fourth Floor	Remove
	5	Fifth Floor	Remove
	6	Sixth Floor	Remove
	7	Seventh Floor	Remove
	8	Eighth Floor	Remove
	9	Ninth Floor	Remove
*			

A large grey rectangular area is visible below the table. A "Save" button is located at the bottom right of the window.

Floor Settings

what floors you have in the building?

Go to tab **Floor Settings**, choose the Floor ID, Floor Name, Click button Save after it's done.



Building/Floor/Room Management

Building Definition | Floor Definition | **Floor Settings** | Room Settings

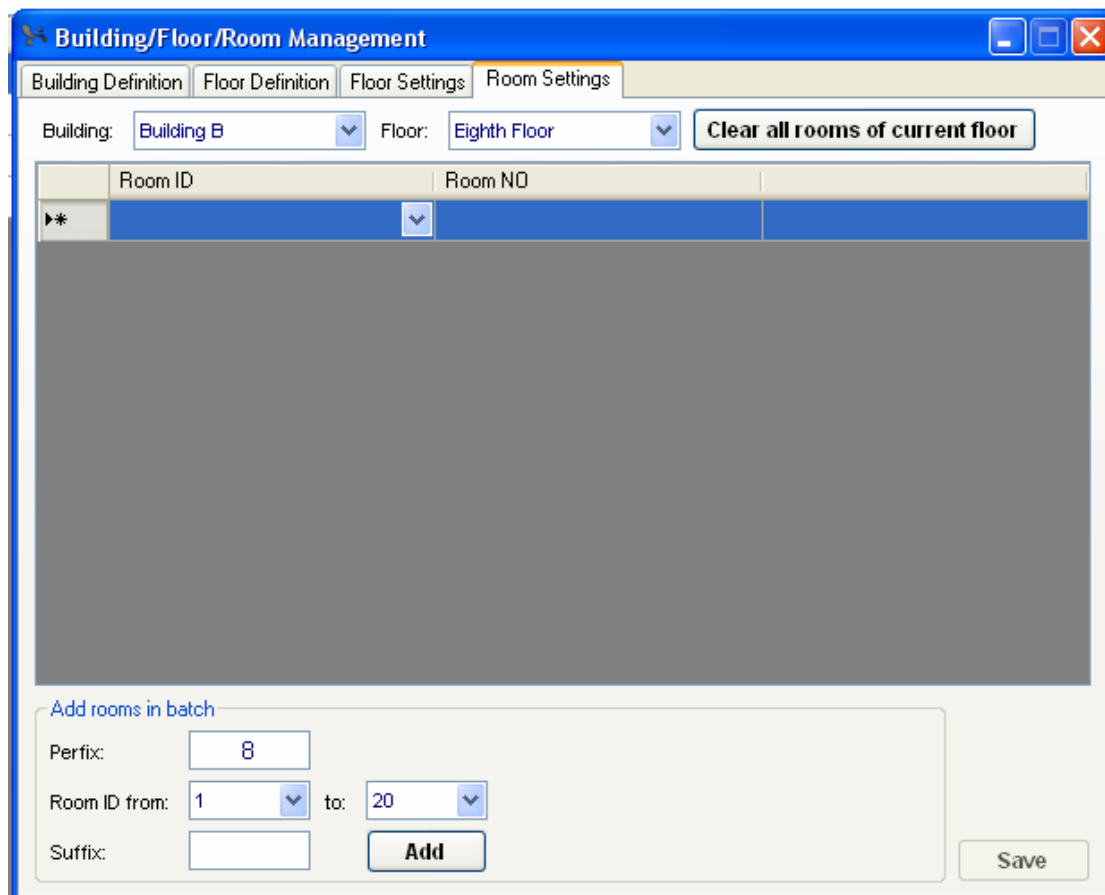
Building:

	Floor ID	Floor Name	
▶	8	Eighth Floor	▼ Remove
	9	Ninth Floor	▼ Remove
*			▼

Room Settings

what are the room No in each floor?

Choose the building and floor, then you can go add the room# you need in batch.



Building/Floor/Room Management

Building Definition | Floor Definition | Floor Settings | **Room Settings**

Building: Floor:

	Room ID	Room NO
▶*	▼	

Add rooms in batch

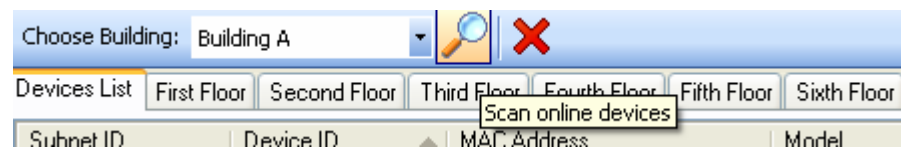
Perfix:

Room ID from: to:

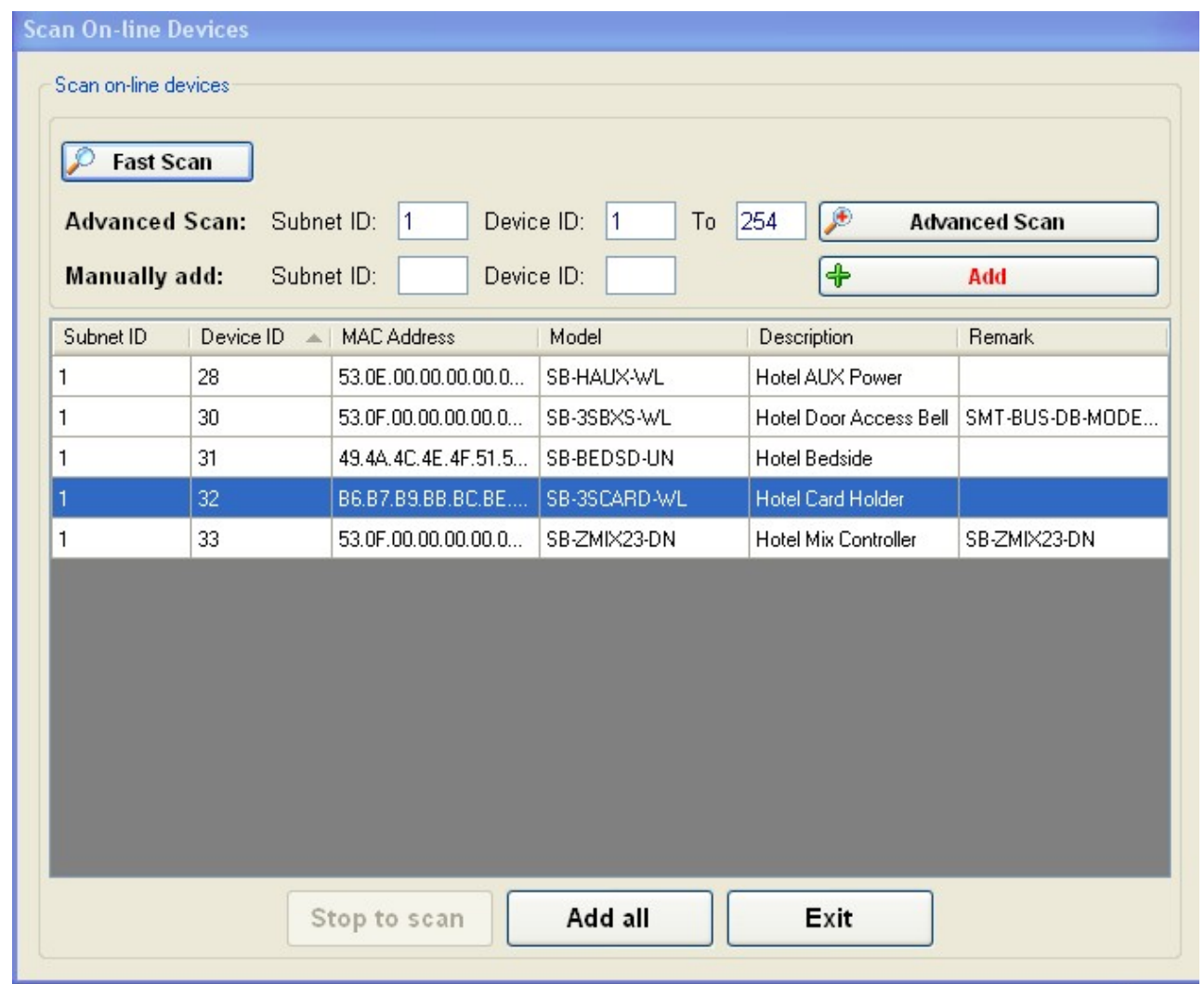
Suffix:

10. Scan all online devices

Click the scan button on the toolbar as below

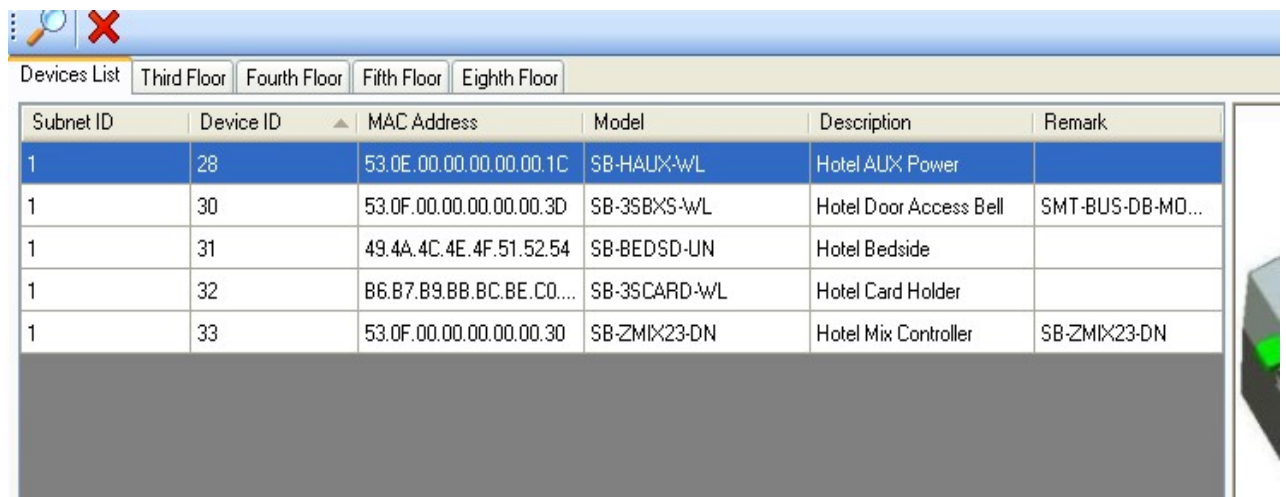


Click button **Fast Scan**



After you got all the online devices, click button **Add All** to devices list.

Device List



Subnet ID	Device ID	MAC Address	Model	Description	Remark
1	28	53.0E.00.00.00.00.1C	SB-HAUX-WL	Hotel AUX Power	
1	30	53.0F.00.00.00.00.3D	SB-3SBXS-WL	Hotel Door Access Bell	SMT-BUS-DB-MO...
1	31	49.4A.4C.4E.4F.51.52.54	SB-BEDSD-UN	Hotel Bedside	
1	32	B6.B7.B9.BB.BC.BE.C0....	SB-3SCARD-WL	Hotel Card Holder	
1	33	53.0F.00.00.00.00.30	SB-ZMIX23-DN	Hotel Mix Controller	SB-ZMIX23-DN

11. Pairing Room Devices

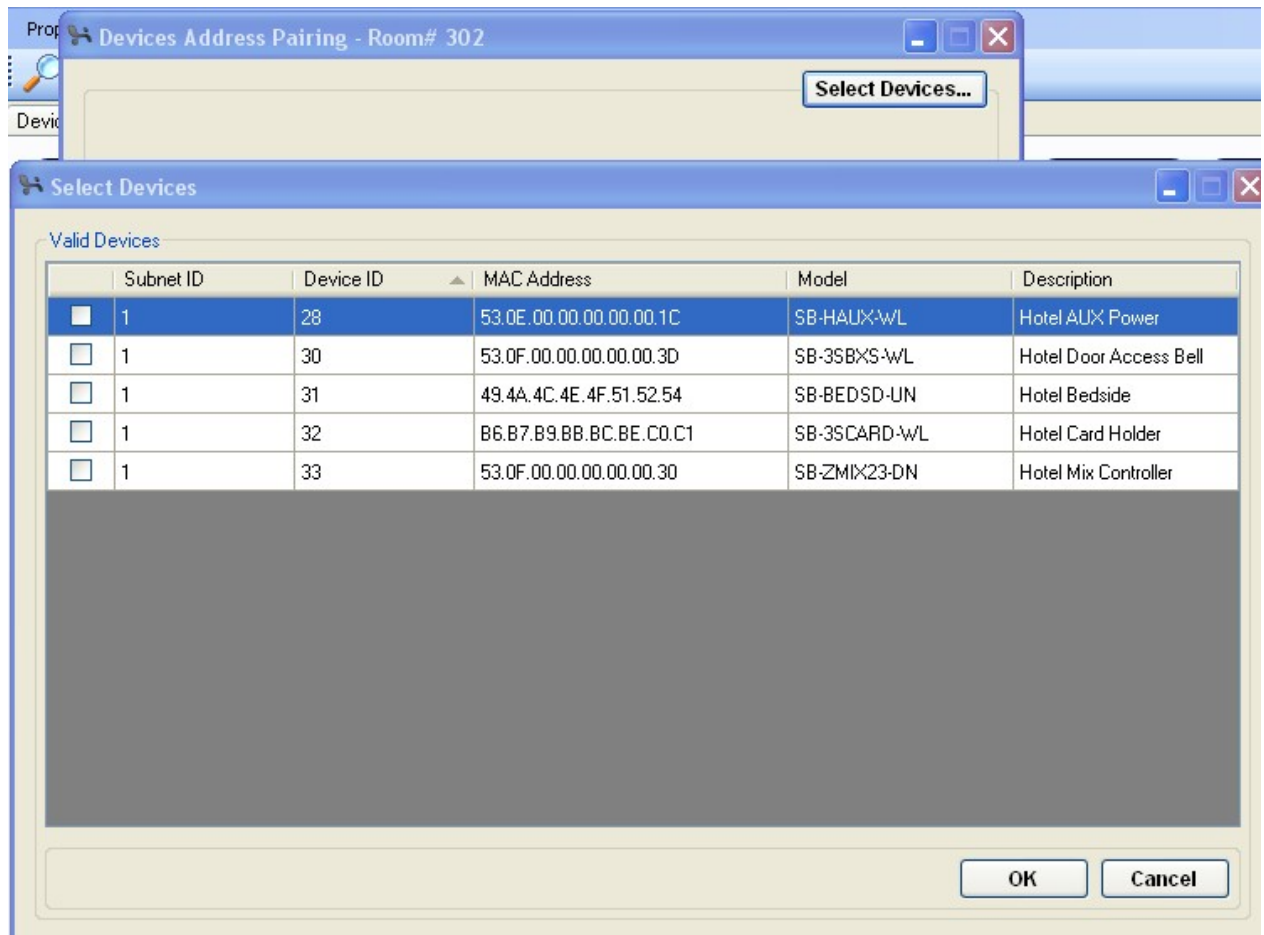
Here take room# 302 as example



Double click the room#,



Click the button **Select Device...**



Choose the devices that you would like to add to current room. Then click button **OK**

please note that the devices has been added to other room will not show in above screen, if would like to change, you need to remove the devices from that room first.

List for MAX QTY of device in one room		
SN	Device	MAX QTY can be added to one room
1	Hotel Door Bell Access	1
2	Hotel Card Holder	1
3	Hotel AUX Power	1
4	Hotel Zone Beast	1
5	Hotel Bedside Controller	2

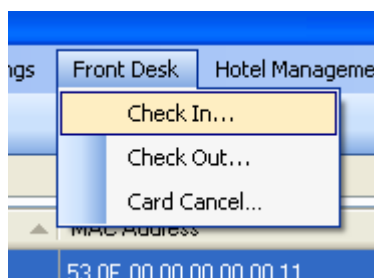


Click above button **Save Pairing**, after successfully pair the devices in the room, the screen shows as below



12. Check in

on the smart hotel system software, menu **Front Desk**, click **Check In**,



Check In

Guest Info

ID Number/Passport:

Name:


Card

Card Type:

Guest

Permission:

One Room



Room

Building:

Building A

Room:

880

Check out:

星期二 04/24/2012

13:00

0

Nights

Add

☒ Auto clear after check in

Clear Now

SN	Building	Room	Checkout
----	----------	------	----------

Check In Now

Here is the example for releasing guest card:

Check In

Guest Info

ID Number/Passport: G12394943

Name: Sam Jobs

Card

Card Type: Guest

Permission: One Room

Room

Building: Building A

Room: 302

Check out: 星期五 05/04/2012 13:00 10 Nights

Add

Clear Now

☒ Auto clear after check in

SN	Building	Room	Checkout
----	----------	------	----------

Check In Now

1. Input Guest Information

2. Choose card type: Guest

3. Choose room#

4. Input QTY of nights

5. Click Button Add

Check In

Guest Info

ID Number/Passport:

G12394943

Name:

Sam Jobs


Card

Card Type:

Guest

Permission:

One Room



Room

Building:

Building A

Room:

302

Check out:

星期五 05/04/2012

13:00

10

Nights

Add

☒ Auto clear after check in

Clear Now

SN	Building	Room	Checkout	
1	Building A	302	星期五 05/04/2012 13:00	Remove

Check In Now

Click above button **Check In Now**

Guest Info
ID Number/Passport:
Name:

Card
Card Type:
Guest
Permission:
One Room

Room
Building:
Building A
Room:
302
Check out:
星期二 04/24/2012
13:00
0
Nights
Add

☒ Auto clear after check in
Clear Now

SN	Building	Room	Checkout

Check In Now

Status: Successfully release card!

Here is the example for releasing floor card for cleaner:
Put the RF card on the Card encode device.



Check In

Guest Info
 ID Number/Passport:
 Name:

Card
 Card Type:
 Permission:

Room
 Building: Floor:
 Check out: Nights

☒ **Auto clear after check in**

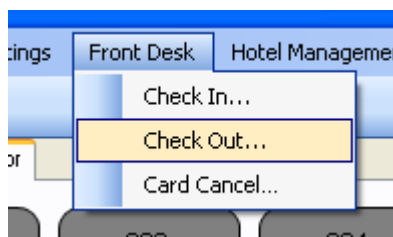
SN	Building	Floor	Checkout	
1	Building A	Eighth Floor	星期三 05/29/2013 13:00	Remove
2	Building A	Ninth Floor	星期三 05/29/2013 13:00	Remove

After successfully release card, it will show the status on the bottom.

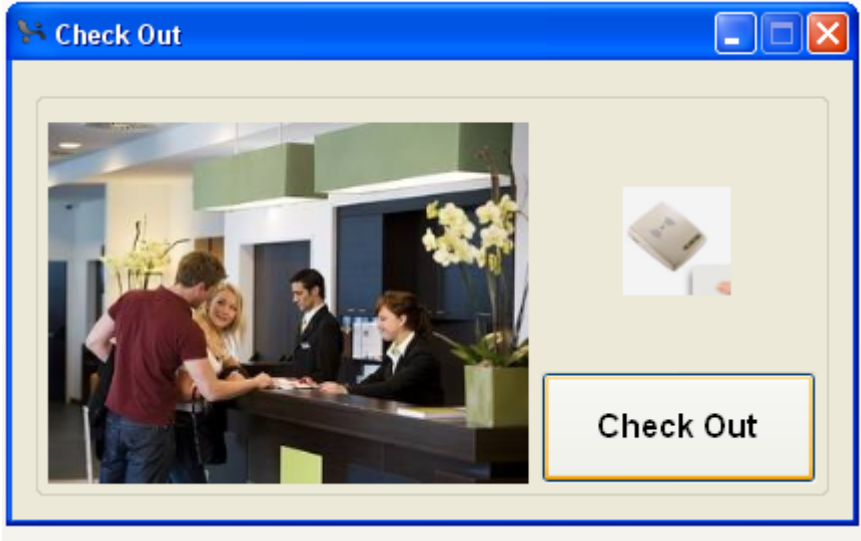
Status: Successfully release card!

Now this card can open the doors of eighth and night floor.

13. Check Out

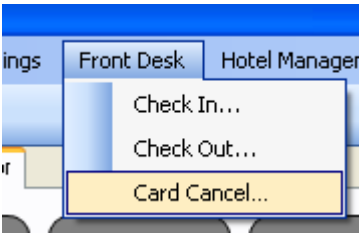


Put the card on card encoding device,
click button **Check Out**

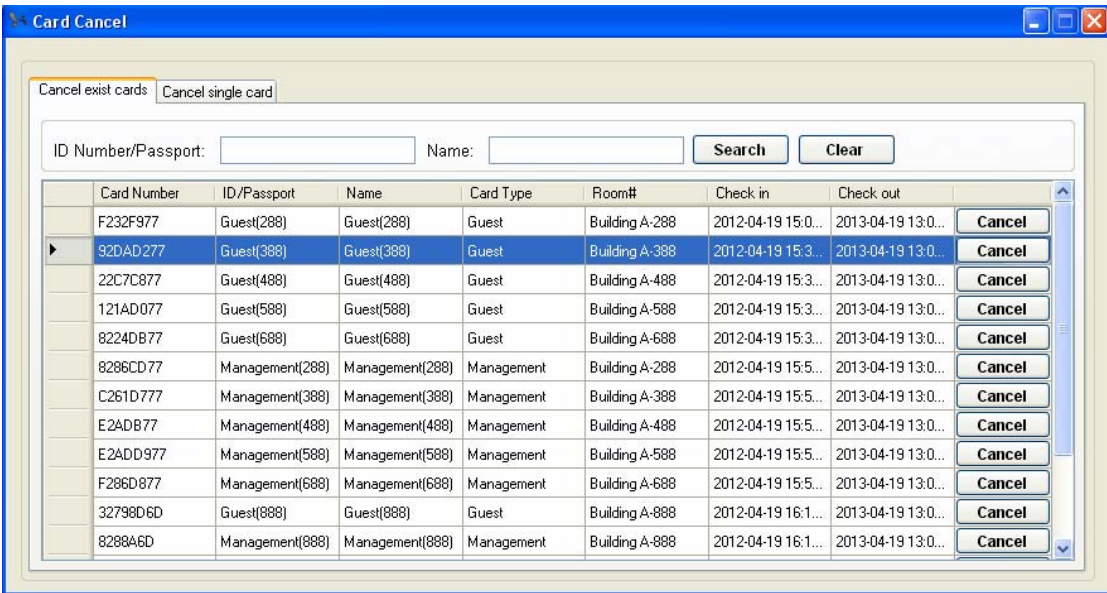


14. Cancel Card

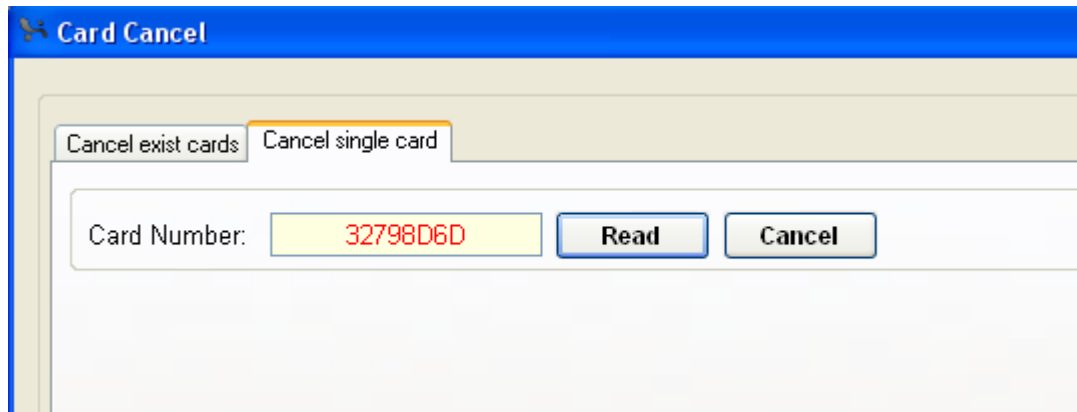
All card number will be stored in SQL Server when check in, if the card is loss, you can cancel this card by software.



You search the card name or ID or passport,



or if you have card on your hand, you can read the card number, then cancel it.



15. Hotel Door Bell Access Settings

choose the room# that you would like to configure; here take the room# 302 as example.

Double click the room# 302





Double click the picture of hotel door bell access

Hotel Door Bell

General **Dry Contact**

Address & Remark

Subnet ID: Device ID:

MAC:

Model:

Remark:

Time of Door Bell

Date:

Calibration according to date time of your computer:

Product Picture

The Hotel Door Bell access has built in the clock, if the clock on the module is not accurate, please presses the button **Calibrate Now** above.

Dry Contact Settings

please know that Dry Contact 2 is for door magnet sensor, so Dry Contact 2 must be NC.

Hotel Door Bell

General **Dry Contact**

Dry Contact 1

Status:

☐ NC ☒ NO

Dry Contact 2

Status:

☒ NC ☐ NO

16. Hotel Card Holder Settings



Double click the picture of hotel card holder

Hotel Card Holder

General Dry Contact

Address & Remark

Subnet ID: 1 Device ID: 32 Save

MAC: B6.B7.B9.BB.BC.BE.C0.C1

Model: SB-3SCARD-WL

Remark: Save

Product Picture

The screenshot shows a software window titled "Hotel Card Holder" with a standard Windows-style title bar. Inside, there are two tabs: "General" and "Dry Contact", with the latter being the active tab. The interface contains two identical configuration sections for dry contacts. The first section, labeled "Dry Contact 1", shows a "Status:" label followed by a yellow box containing the word "Opened". Below this, there are two radio buttons: "NC" (which is unselected) and "NO" (which is selected, indicated by a green dot). The second section, labeled "Dry Contact 2", mirrors the first, also showing "Status: Opened" and with the "NO" radio button selected. A "Save" button is positioned at the bottom right of the configuration area.

Please know that the dry contact 1 is for external bell, dry contact 1 can connect to normal external bell to turn on /off the bell.
So it must be NO

17. Hotel AUX Power Settings



Double click the picture of AUX Power:

Hotel AUX Power

General Mood for Power On

Address & Remark

Subnet ID: 1 Device ID: 28 Save

MAC: 53.0E.00.00.00.00.1C


Model: SB-HAUX-WL

Remark: Gary Save

Delay Time of Power Off

Delay Time: 5 Seconds (5s - 254s) Save

Product Picture



Delay Time for Power Off.

Mood for Power On

Mood is up to 10, the current default mood only has one.

Hotel AUX Power

General Mood for Power On

Mood Information

Mood from: 1 to 10 Read

ID	Mood Name	Default Mood
1	summer	<input checked="" type="checkbox"/>
2	winter	<input type="checkbox"/>
3	Night	<input type="checkbox"/>
4		<input type="checkbox"/>
5		<input type="checkbox"/>
6		<input type="checkbox"/>
7		<input type="checkbox"/>
8		<input type="checkbox"/>
9		<input type="checkbox"/>
10		<input type="checkbox"/>

Modify Mood Description

Command information

Command from: 1 to 10 Read

ID	Subnet ID	Device ID	Type	Parameter1	Parameter2
1	1	33	Single Channel Li...	1(Cannel no.)	100(Intensity %)
2	1	33	Single Channel Li...	2(Cannel no.)	100(Intensity %)
3	1	33	Single Channel Li...	3(Cannel no.)	100(Intensity %)
4	1	33	Panel Control	AC Power	On(Switch Status)
5	1	33	Panel Control	AC Mode	Cool(Mode)
6	1	33	Panel Control	AC Cooling Setpoint	17C(Temperature)
7	1	44	Invalid Switch	N/A	N/A
8	1	44	Invalid Switch	N/A	N/A
9	0	0	Invalid Switch	N/A	N/A
10	0	0	Invalid Switch	N/A	N/A

18. Hotel Zone Beast Settings



Double click the picture of hotel mix controller (Zone Beast)

General

Hotel Mix Controller

General Channel Scene Motors HVAC

Address & Remark:

Subnet ID: 1 Device ID: 33 Save

MAC:

Model: SB-ZMIX23-DN

Remark: SB-ZMIX23-DN Save

Product Picture

Channels

Hotel Mix Controller

General **Channel** Scene Motors HVAC

☐ Synchronous I

Refresh Remark Load Type Lower Limit Higher Limit Switch On Delay Protection Delay

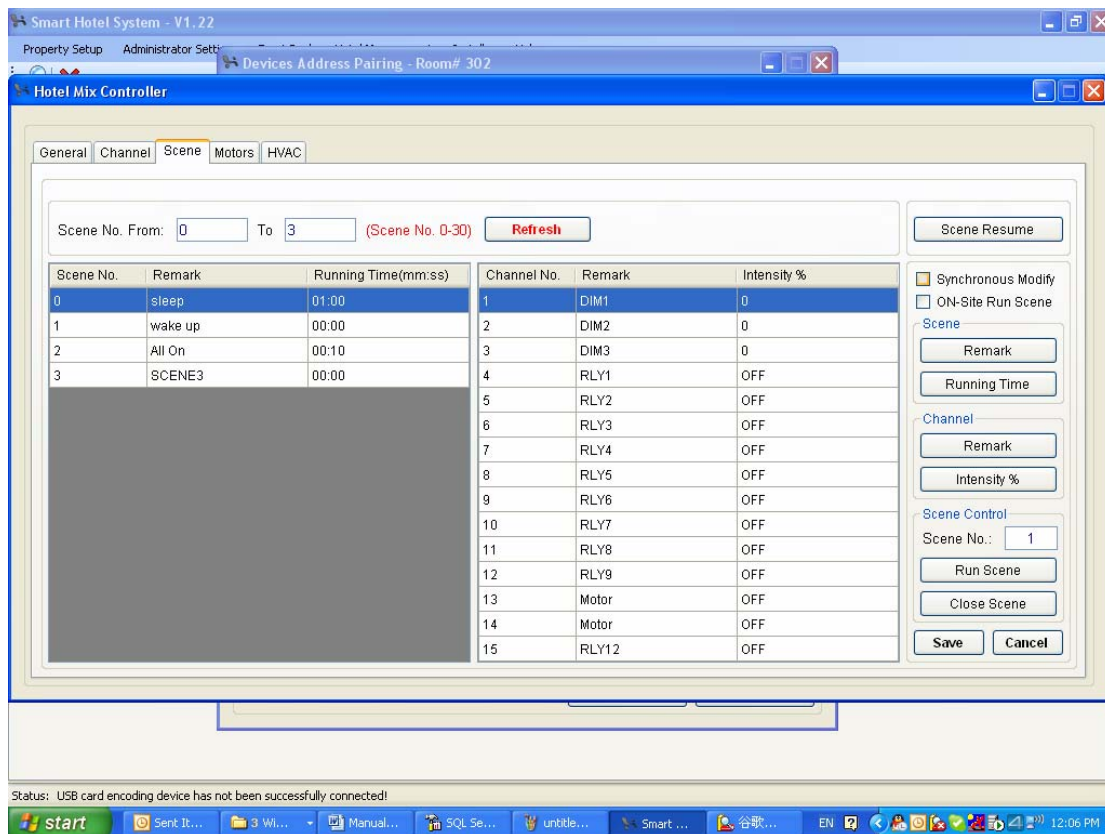
Channel No.	DESC	Remark	Load Type	Lower Limit	Higher Limit	Switch On Delay(s)	Protection Delay
1	Dimming 2A	DIM1	Neon/Cold Cathod...	0	100	<N/A>	<N/A>
2	Dimming 2A	DIM2	Neon/Cold Cathod...	0	100	<N/A>	<N/A>
3	Dimming 2A	DIM3	Neon/Cold Cathod...	0	100	<N/A>	<N/A>
4	Relay 10A	RLY1	Neon/Cold Cathod...	<N/A>	<N/A>	0.0	0
5	Relay 10A	RLY2	Neon/Cold Cathod...	<N/A>	<N/A>	0.0	0
6	Relay 10A	RLY3	Neon/Cold Cathod...	<N/A>	<N/A>	0.0	0
7	Relay 10A	RLY4	Neon/Cold Cathod...	<N/A>	<N/A>	0.0	0
8	Relay 10A	RLY5	Neon/Cold Cathod...	<N/A>	<N/A>	0.0	1
9	Relay 10A	RLY6	Neon/Cold Cathod...	<N/A>	<N/A>	0.0	0
10	Relay 10A	RLY7	Neon/Cold Cathod...	<N/A>	<N/A>	0.0	0
11	Relay 10A	RLY8	Neon/Cold Cathod...	<N/A>	<N/A>	0.0	0
12	Relay 10A	RLY9	Neon/Cold Cathod...	<N/A>	<N/A>	0.0	0

To modify Remark, just click the button **Remark**

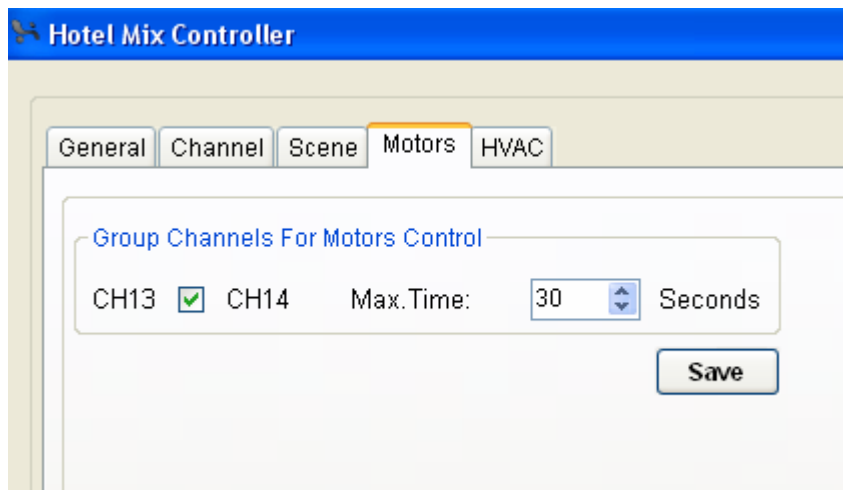
Refresh Save Cancel

Channel No.	DESC	Remark
1	Dimming 2A	DIM1
2	Dimming 2A	DIM2
3	Dimming 2A	DIM3
4	Relay 10A	RLY1
5	Relay 10A	RLY2
6	Relay 10A	RLY3
7	Relay 10A	RLY4
8	Relay 10A	RLY5
9	Relay 10A	RLY6
10	Relay 10A	RLY7
11	Relay 10A	RLY8
12	Relay 10A	RLY9
13	Motor(Relay 10A)	Motor
14	Motor(Relay 10A)	Motor
15	Relay 16A	RLY12

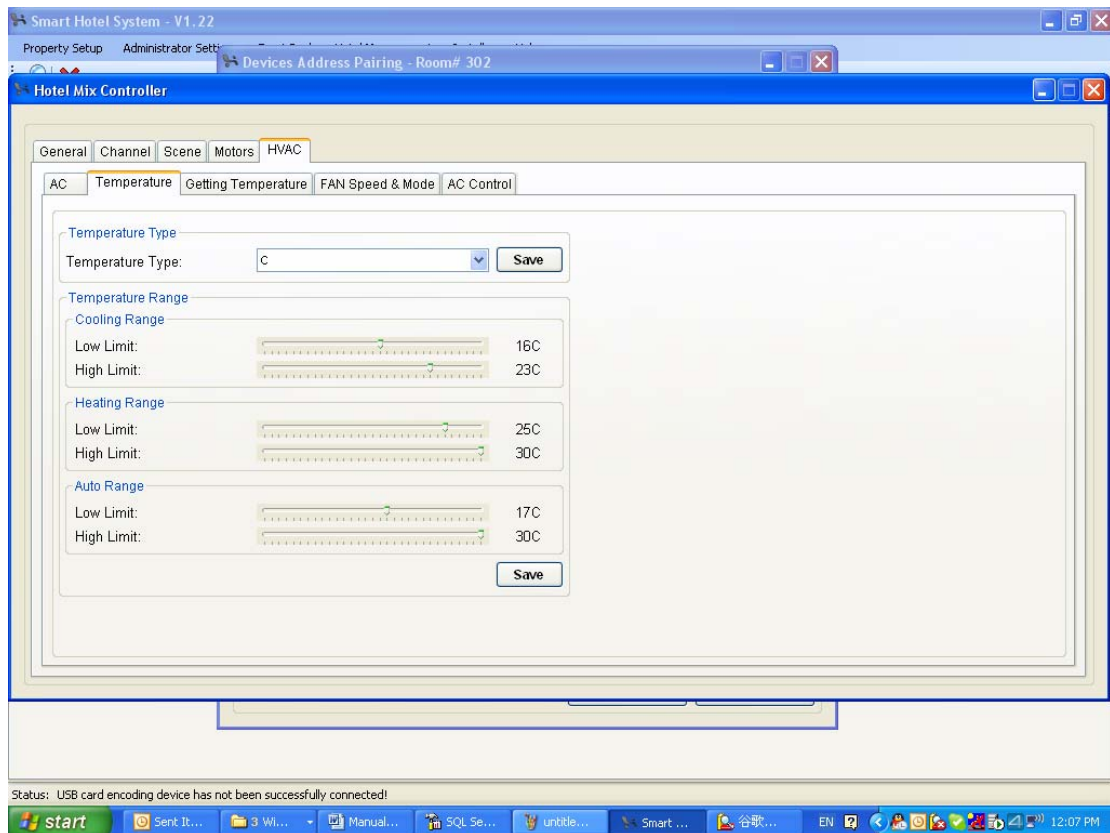
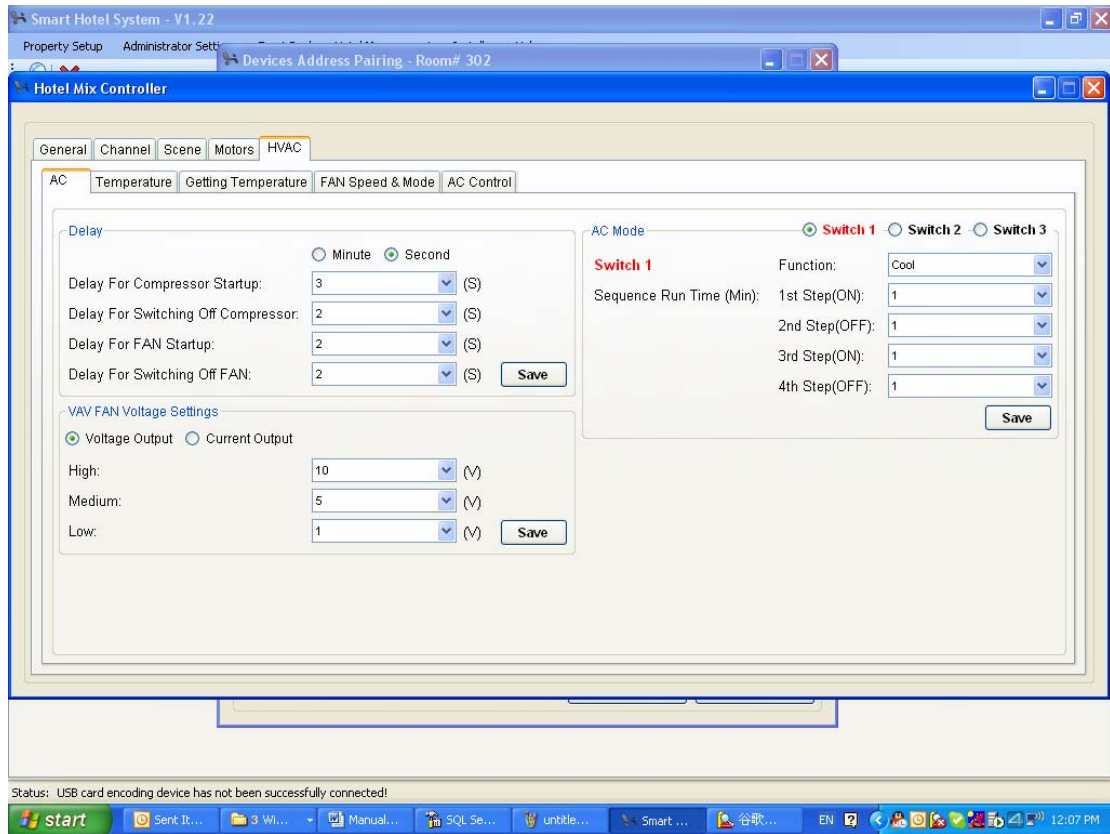
Scene

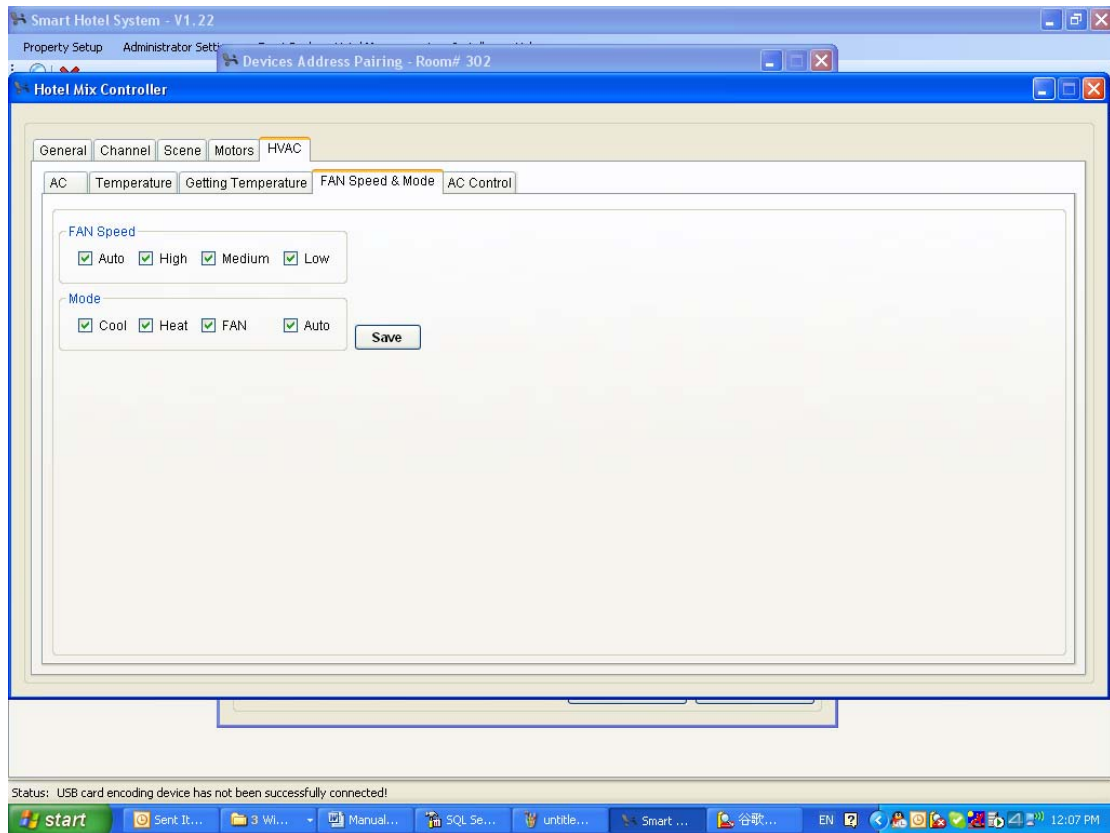
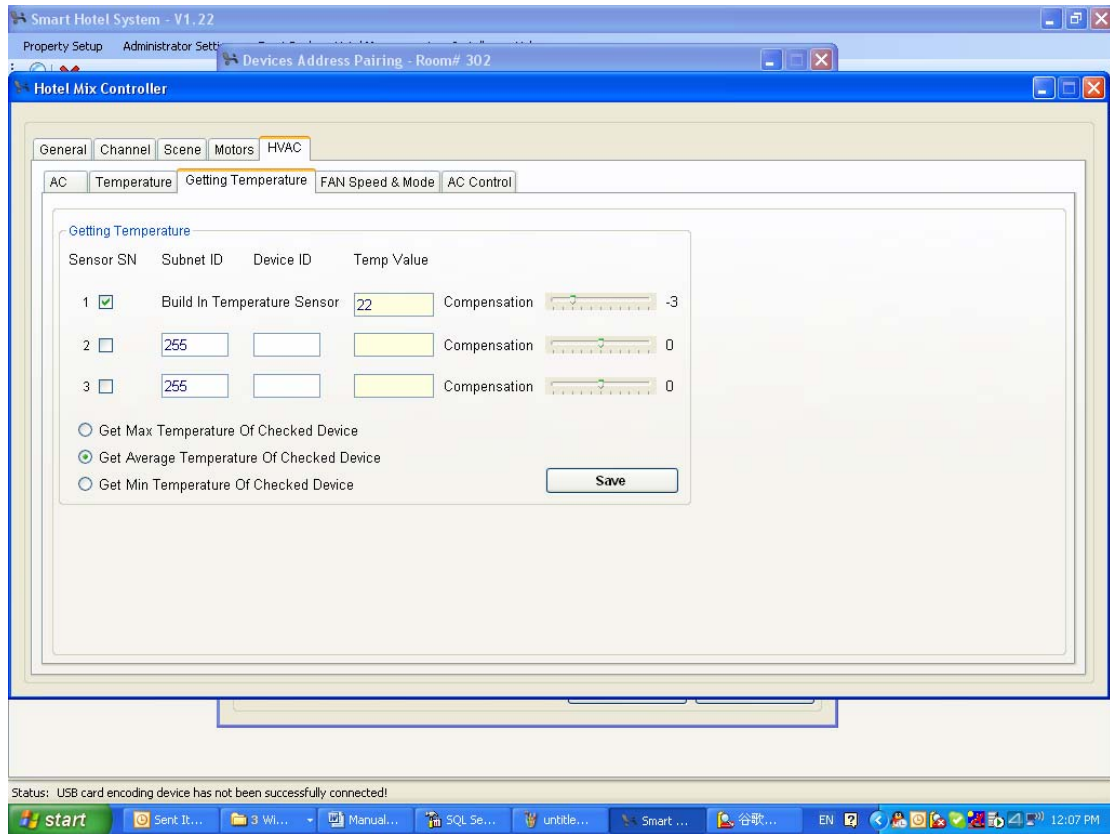


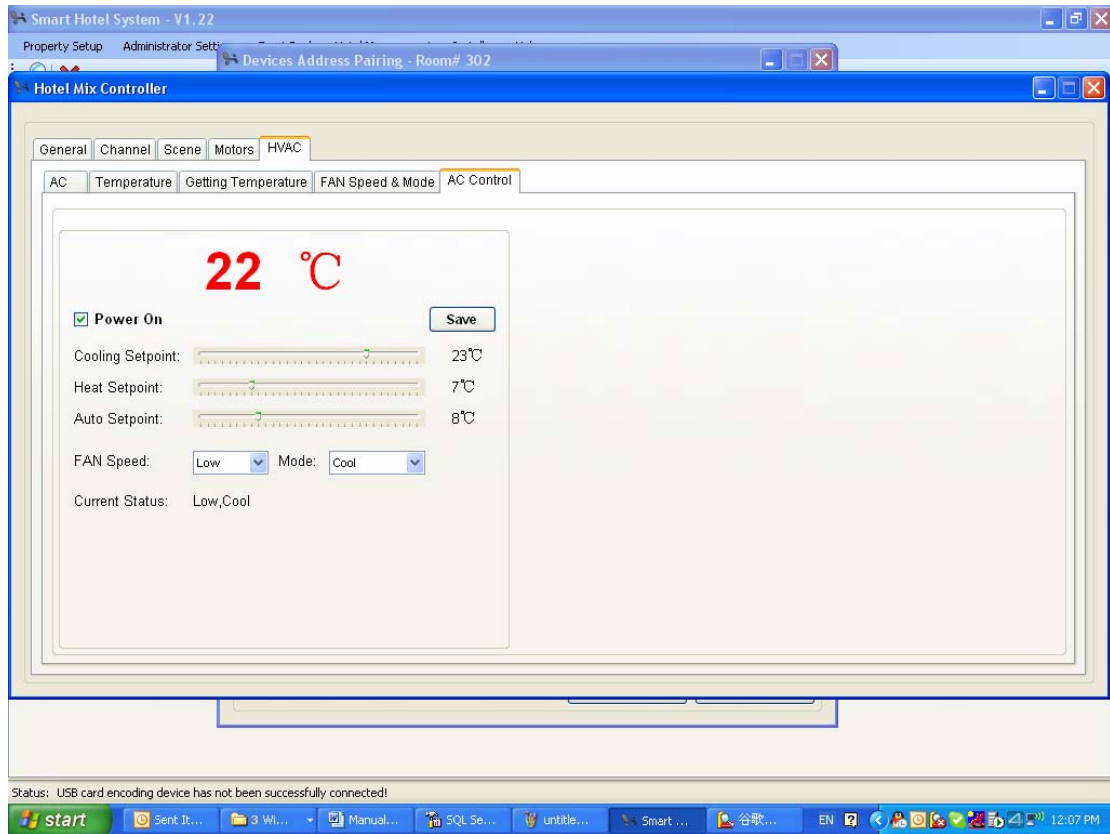
Motor



HVAC







19. Hotel Bedside Controller Settings



Double click the picture of hotel Bedside

Hotel Bedside - Bedside1

General | **Light Control** | Mood for Power On | Curtain Control

Address & Remark

Subnet ID: Device ID:

MAC:

Model:

Remark:


Address Of Card Holder

Subnet ID: Device ID:

Address Of HVAC/Mix Controller

Subnet ID: Device ID:

Product Picture



Smart Hotel System - V1.22

Property Set | **Hotel Bedside - Bedside1**

Devices List

General | **Light Control** | Mood for Power On | Curtain Control

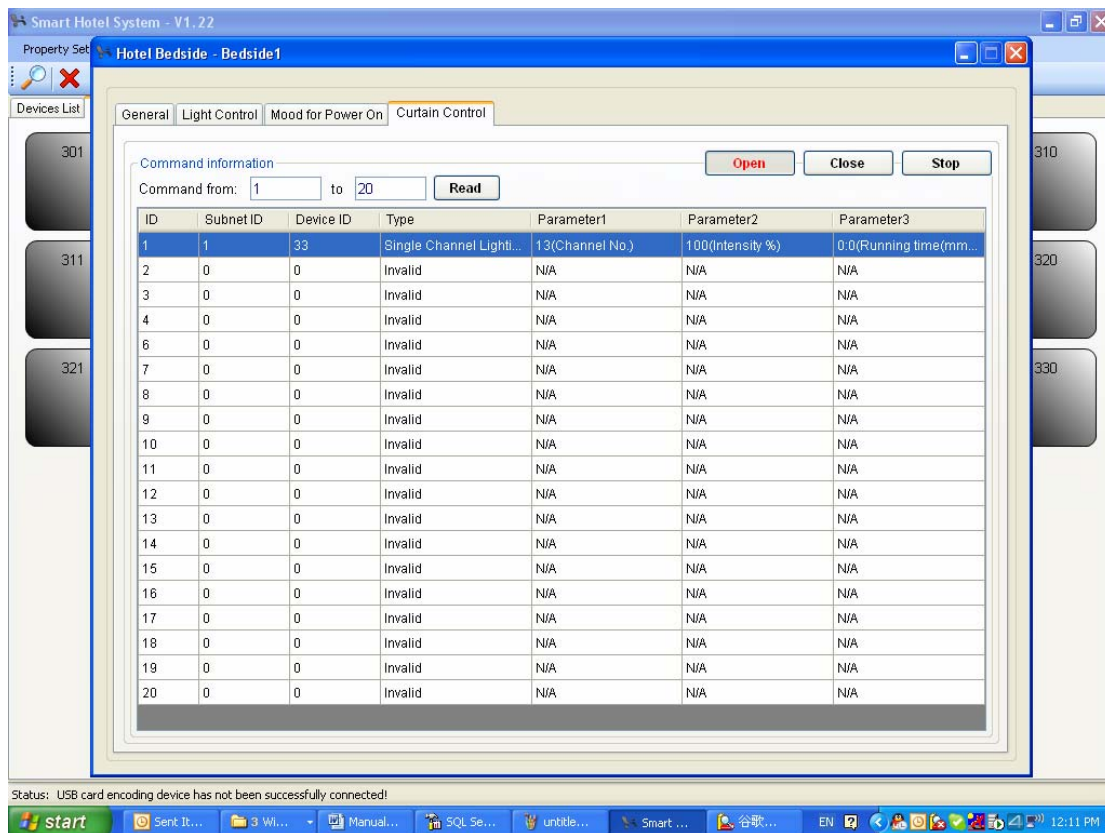
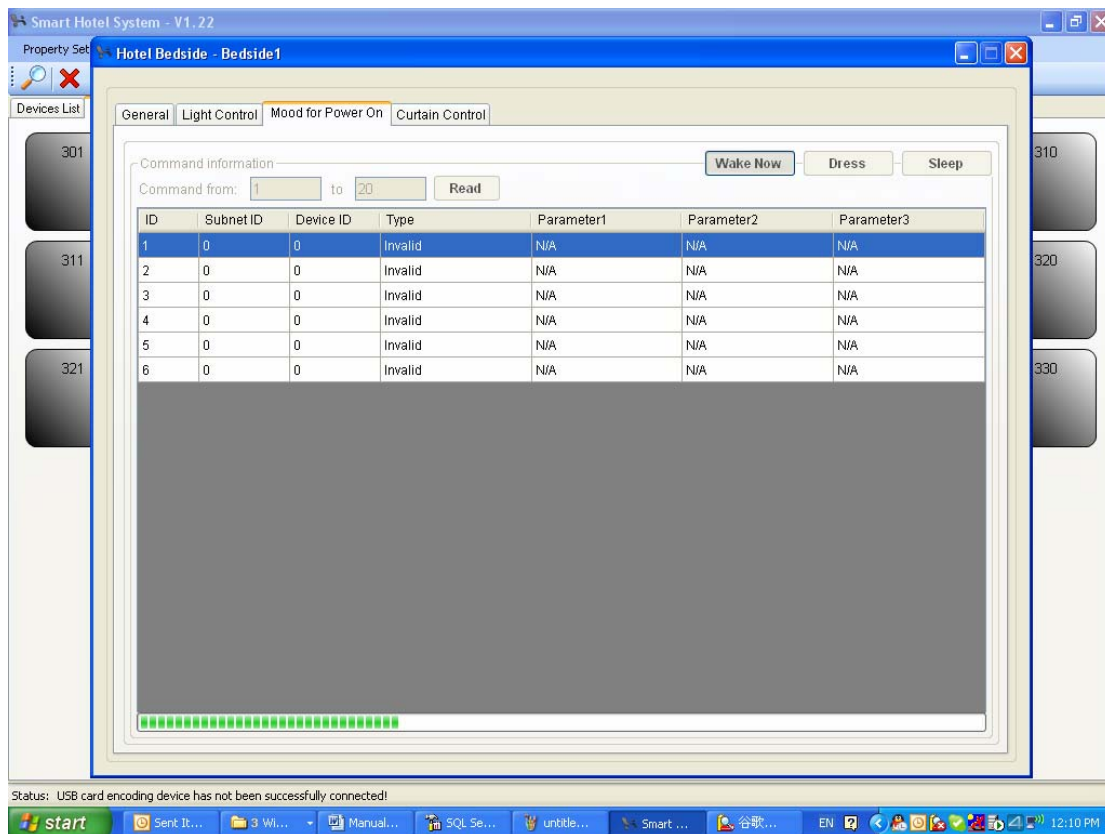
Command information

Command from: to

ID	Subnet ID	Device ID	Type	Parameter1	Parameter2	Parameter3
1	1	33	Single Channel Lighti...	1(Cannel No.)	100(Intensity %)	0.0(Running time(mm...
2	1	33	Single Channel Lighti...	2(Cannel No.)	100(Intensity %)	0.0(Running time(mm...
3	1	33	Single Channel Lighti...	3(Cannel No.)	100(Intensity %)	0.0(Running time(mm...
4	1	33	Single Channel Lighti...	4(Cannel No.)	100(Intensity %)	0.0(Running time(mm...
5	1	33	Single Channel Lighti...	5(Cannel No.)	100(Intensity %)	0.0(Running time(mm...
6	1	33	Single Channel Lighti...	6(Cannel No.)	100(Intensity %)	0.0(Running time(mm...
7	1	33	Single Channel Lighti...	7(Cannel No.)	100(Intensity %)	0.0(Running time(mm...
8	1	33	Single Channel Lighti...	8(Cannel No.)	100(Intensity %)	0.0(Running time(mm...
9	1	33	Single Channel Lighti...	9(Cannel No.)	100(Intensity %)	0.0(Running time(mm...
10	1	33	Single Channel Lighti...	10(Cannel No.)	100(Intensity %)	0.0(Running time(mm...
11	1	33	Single Channel Lighti...	11(Cannel No.)	100(Intensity %)	0.0(Running time(mm...
12	1	33	Single Channel Lighti...	12(Cannel No.)	100(Intensity %)	0.0(Running time(mm...
13	1	33	Single Channel Lighti...	13(Cannel No.)	100(Intensity %)	0.0(Running time(mm...
14	1	33	Single Channel Lighti...	14(Cannel No.)	100(Intensity %)	0.0(Running time(mm...
15	1	33	Single Channel Lighti...	15(Cannel No.)	100(Intensity %)	0.0(Running time(mm...
16	1	33	Invalid	N/A	N/A	N/A

Status: USB card encoding device has not been successfully connected!

start | Sent It... | 3 Wi... | Manual... | SQL Se... | untile... | Smart ... | 谷歌... | EN | 12:10 PM



20. Hotel Bedside Controller Settings



Connect Card encoder device to your computer by USB, it does not request any driver.